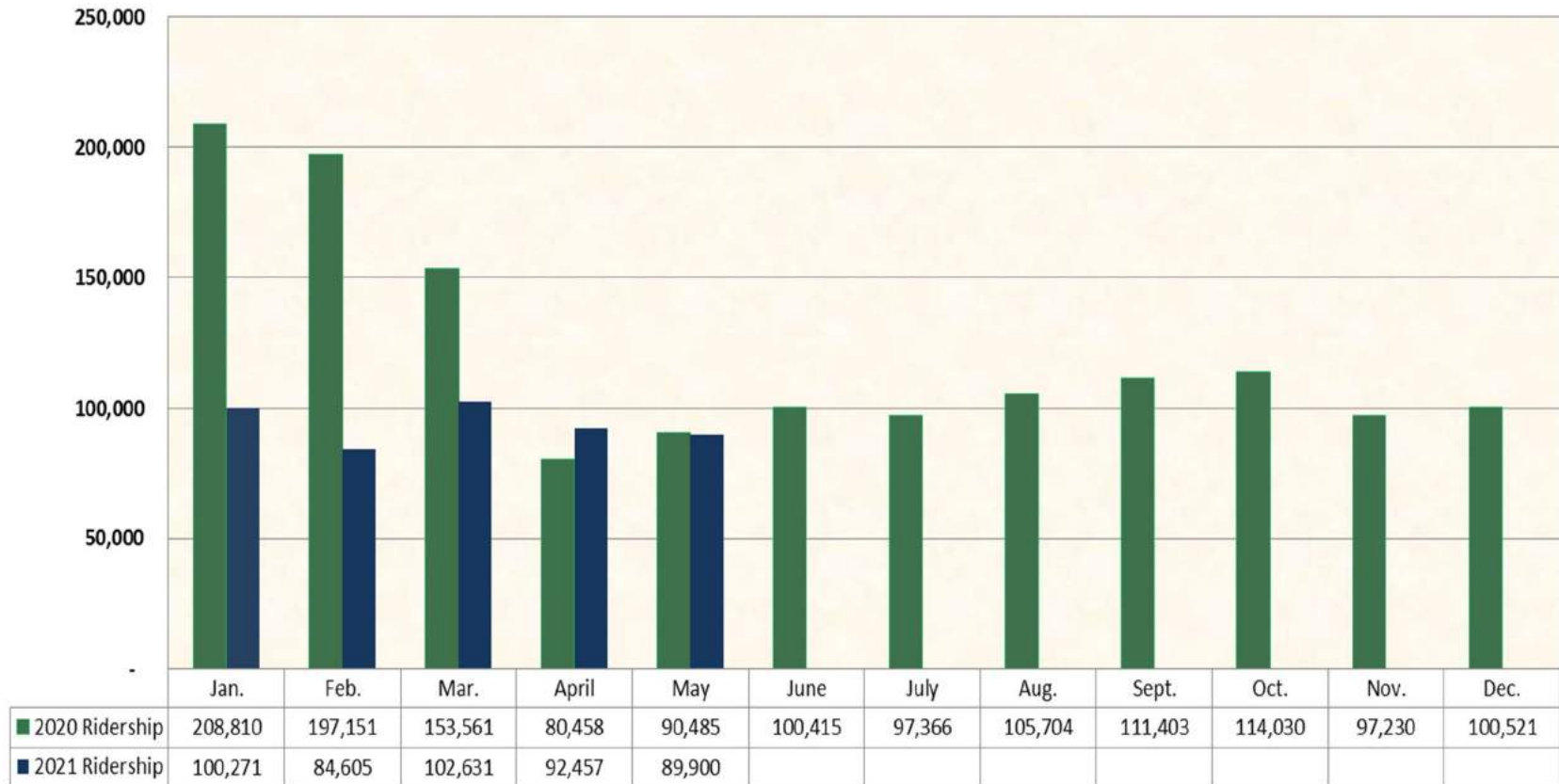
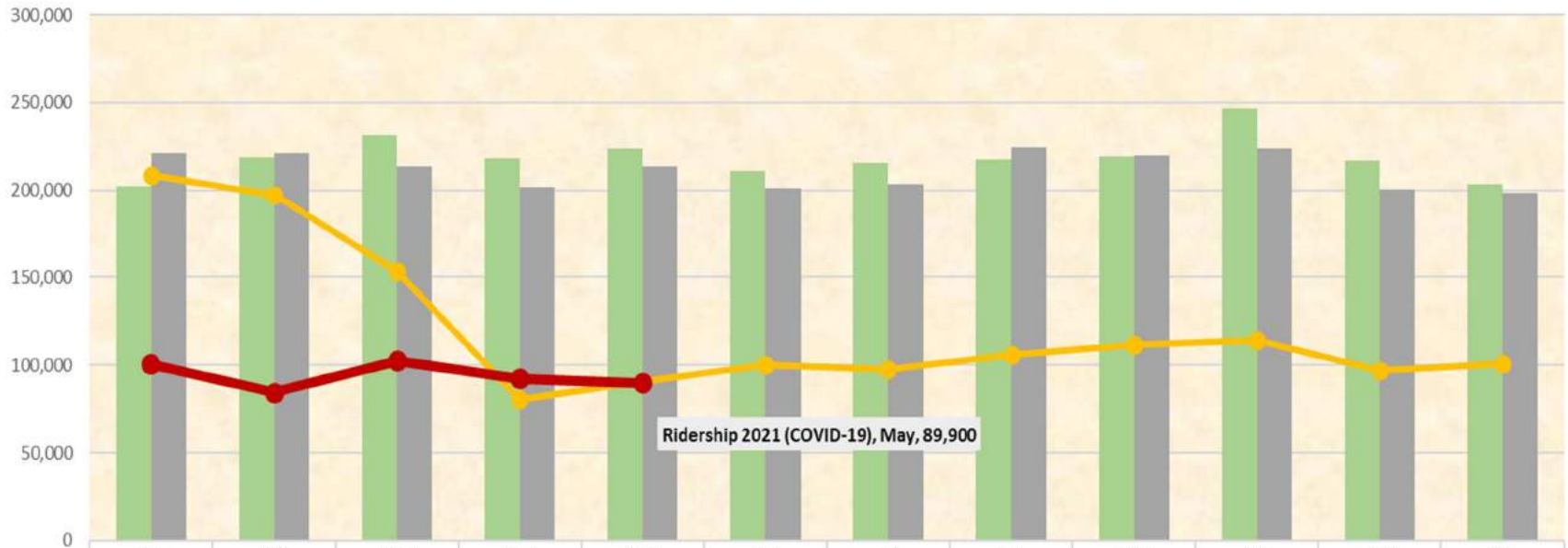


Monthly Ridership 2020-2021



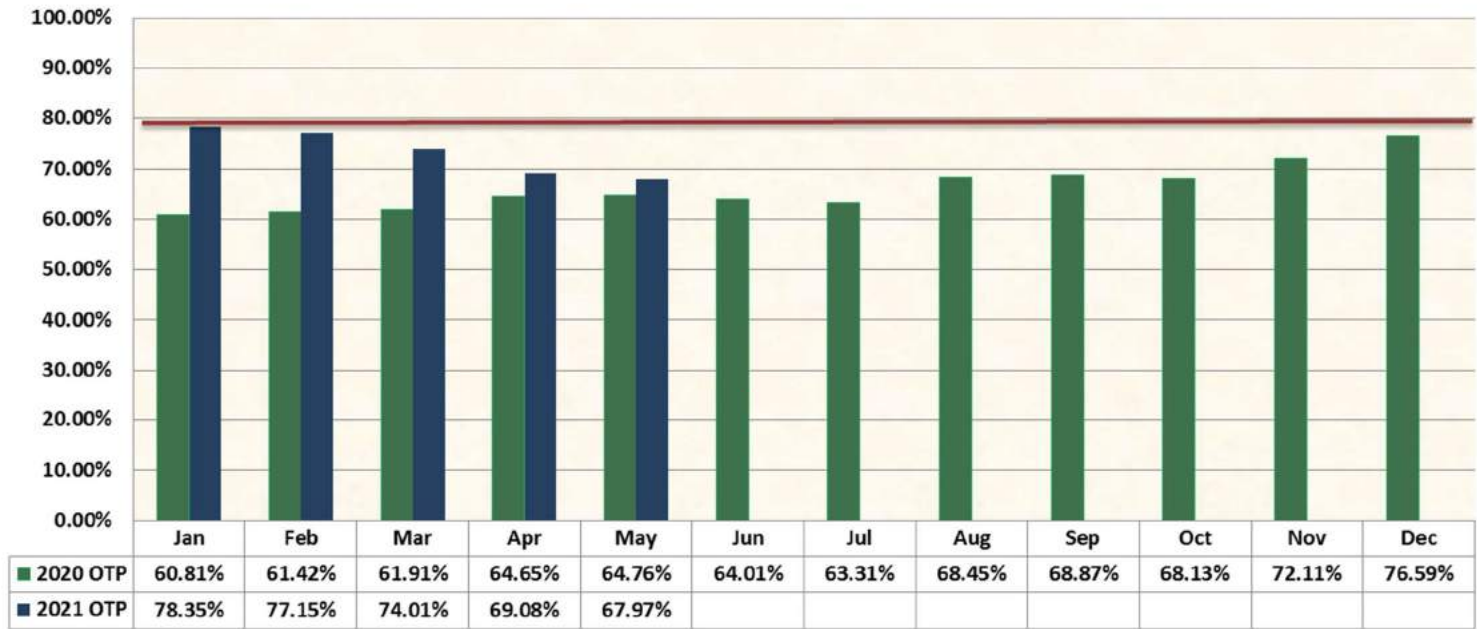


Monthly Ridership 2018-2021



	Jan	Feb	Mar	Apr	May	Jun	Jul	Aug	Sep	Oct	Nov	Dec
■ Ridership 2018	202,296	219,091	231,324	218,241	223,663	211,464	215,967	217,291	219,337	246,615	216,649	203,627
■ Ridership 2019	221,453	221,163	213,485	201,647	213,627	201,041	203,476	224,556	220,042	223,657	200,579	198,778
—◆— Ridership 2020 (COVID-19)	208,810	197,151	153,561	80,458	90,485	100,415	97,366	105,704	111,403	114,030	97,230	100,521
—●— Ridership 2021 (COVID-19)	100,271	84,605	102,631	92,547	89,900							

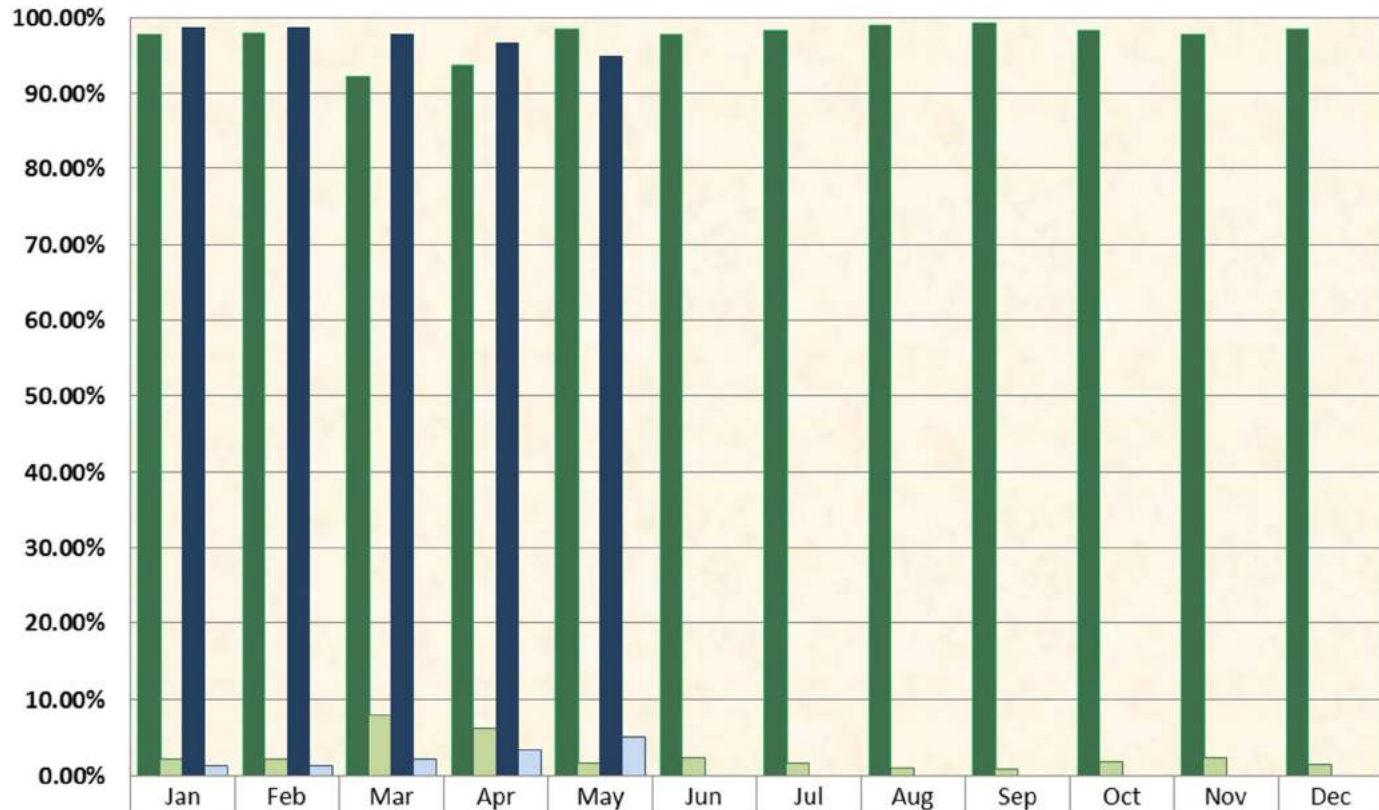
On-Time Performance 2020-2021



*Target 80% On-Time Performance

Note: On-Time performance is measured at scheduled timepoints which represent 4.89% of the total system bus stops

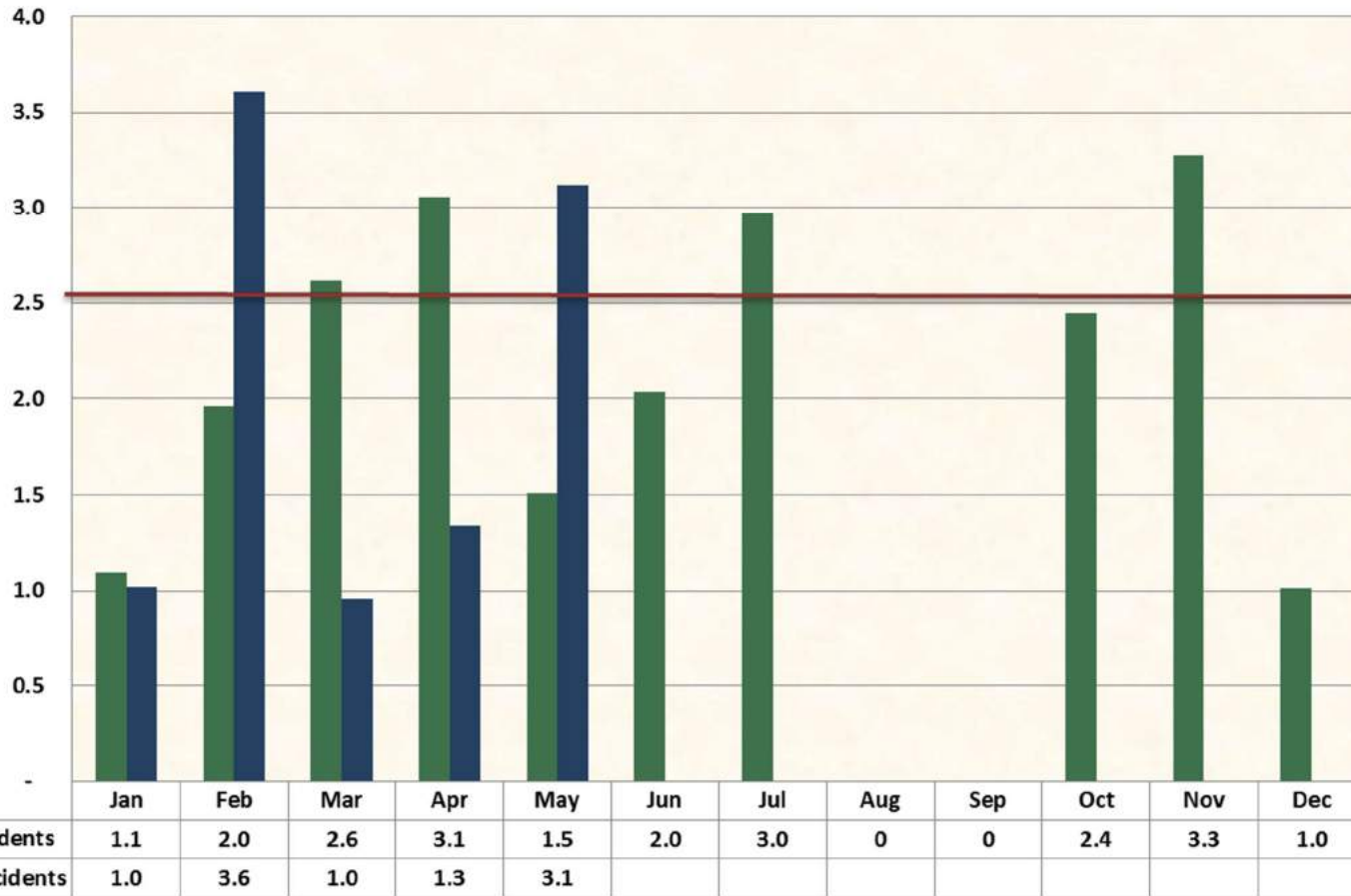
% Trips Operated 2020-2021



■ 2020 % Operated Trips	97.80%	97.89%	92.13%	93.76%	98.38%	97.71%	98.32%	98.97%	99.21%	98.24%	97.68%	98.49%
■ 2020 % Missed Trips	2.20%	2.11%	7.87%	6.24%	1.62%	2.29%	1.68%	1.03%	0.79%	1.76%	2.32%	1.51%
■ 2021 % Operated Trips	98.67%	98.64%	97.76%	96.67%	94.93%							
■ 2021 % Missed Trips	1.33%	1.36%	2.24%	3.33%	5.07%							



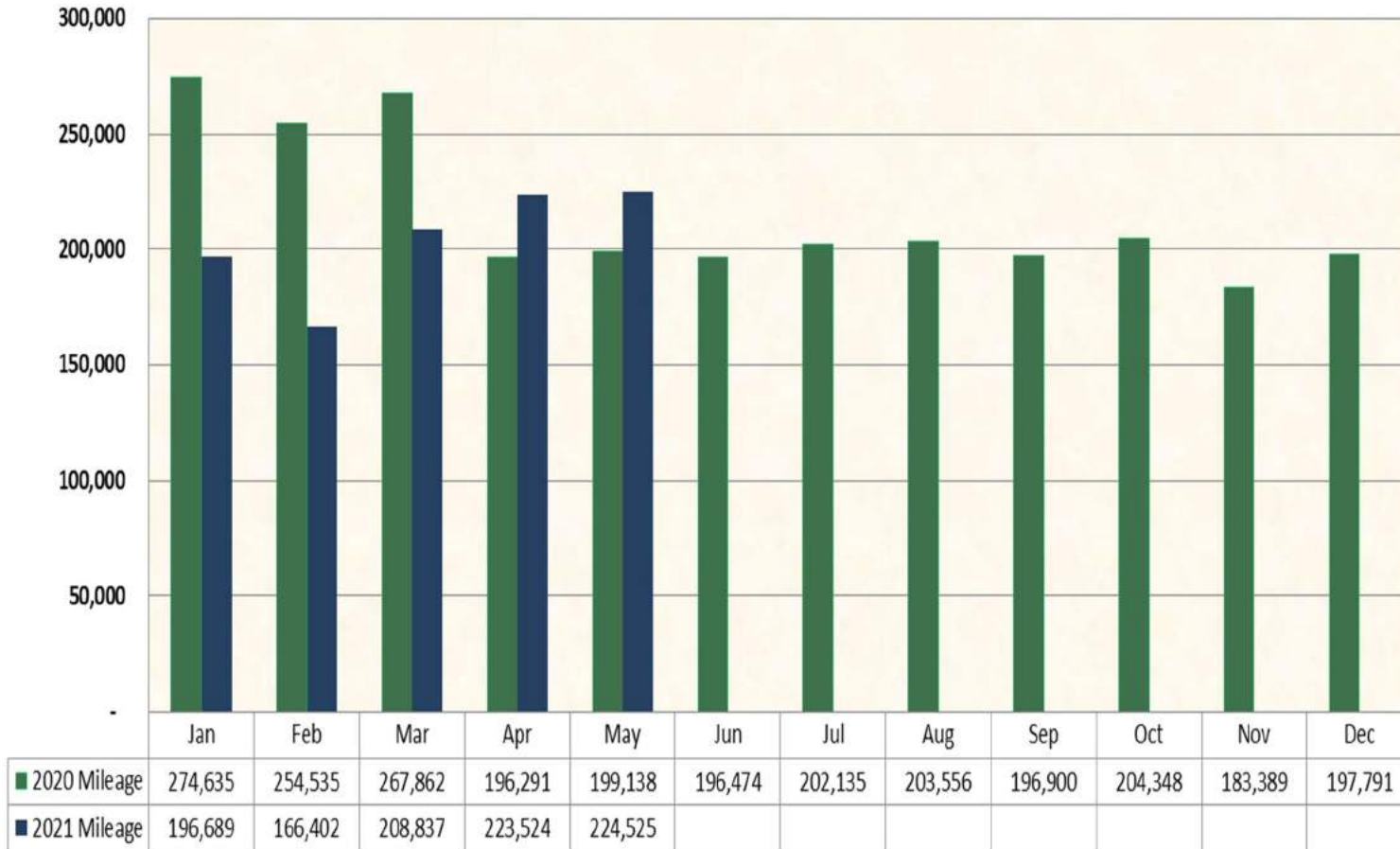
Preventable Accidents per 100,000 Miles 2020-2021



*Target Below 2.5 Preventable Accidents Per 100,000 Miles

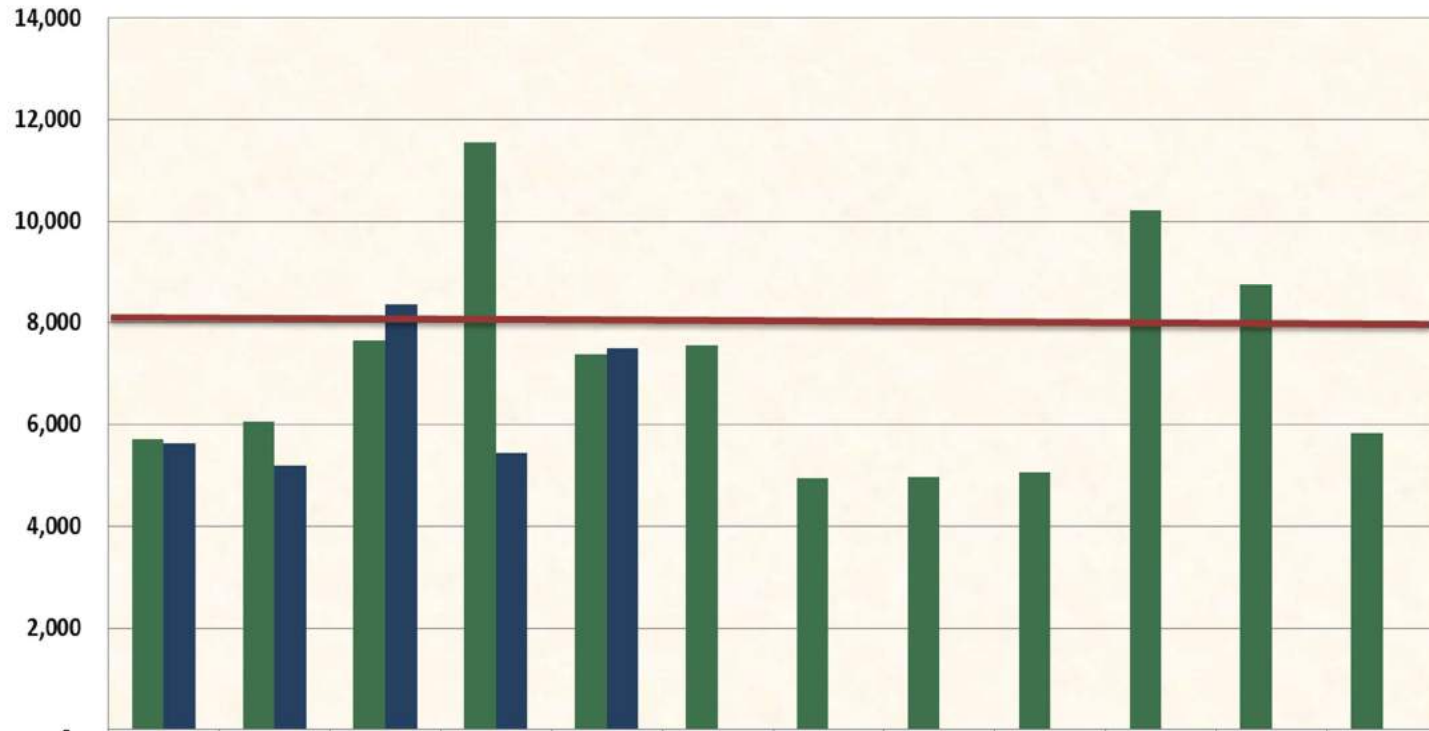


Mileage 2020-2021





Mean Miles Between Road Calls 2020-2021



	Jan	Feb	Mar	Apr	May	Jun	Jul	Aug	Sep	Oct	Nov	Dec
■ 2020 Mean Miles Between Road Calls	5,722	6,060	7,653	11,547	7,375	7,557	4,930	4,965	5,049	10,217	8,731	5,817
■ 2021 Mean Miles Between Road Calls	5,620	5,200	8,353	5,452	7,484							