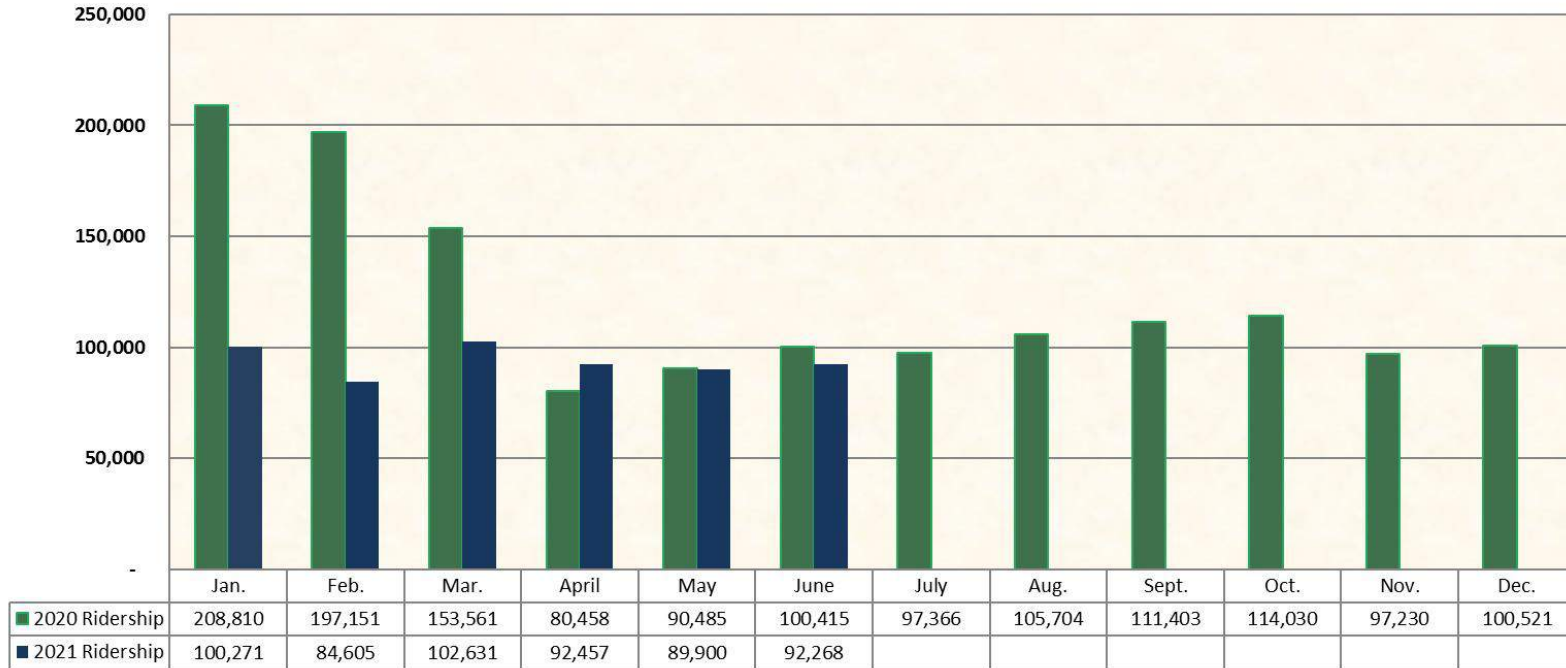
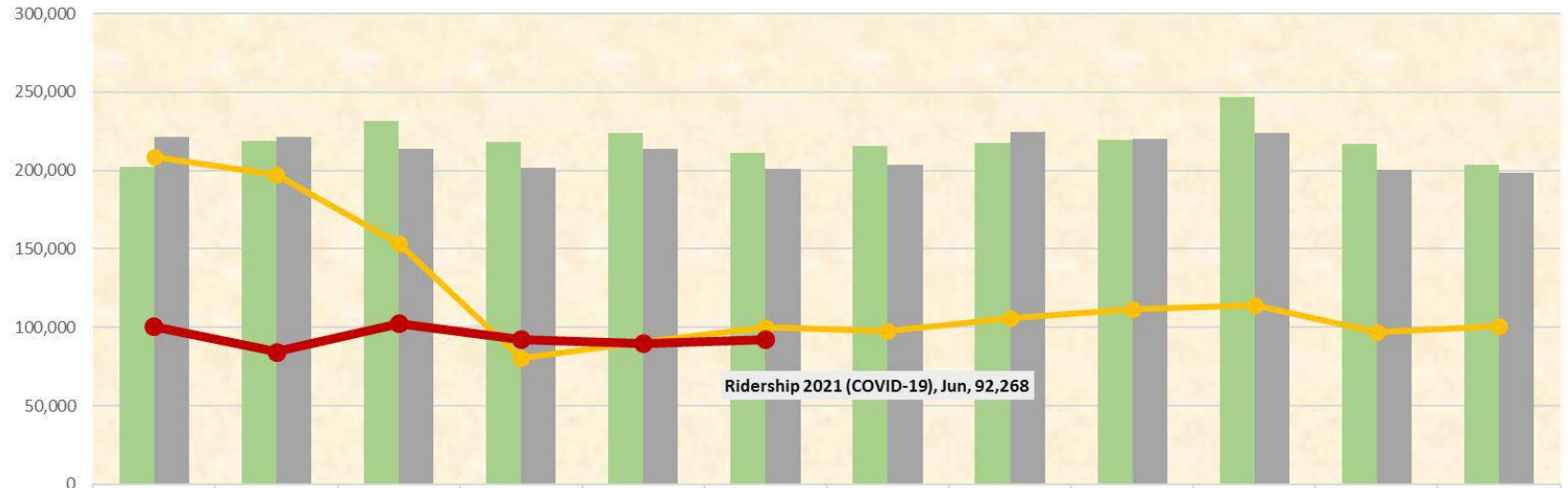


Monthly Ridership 2020-2021



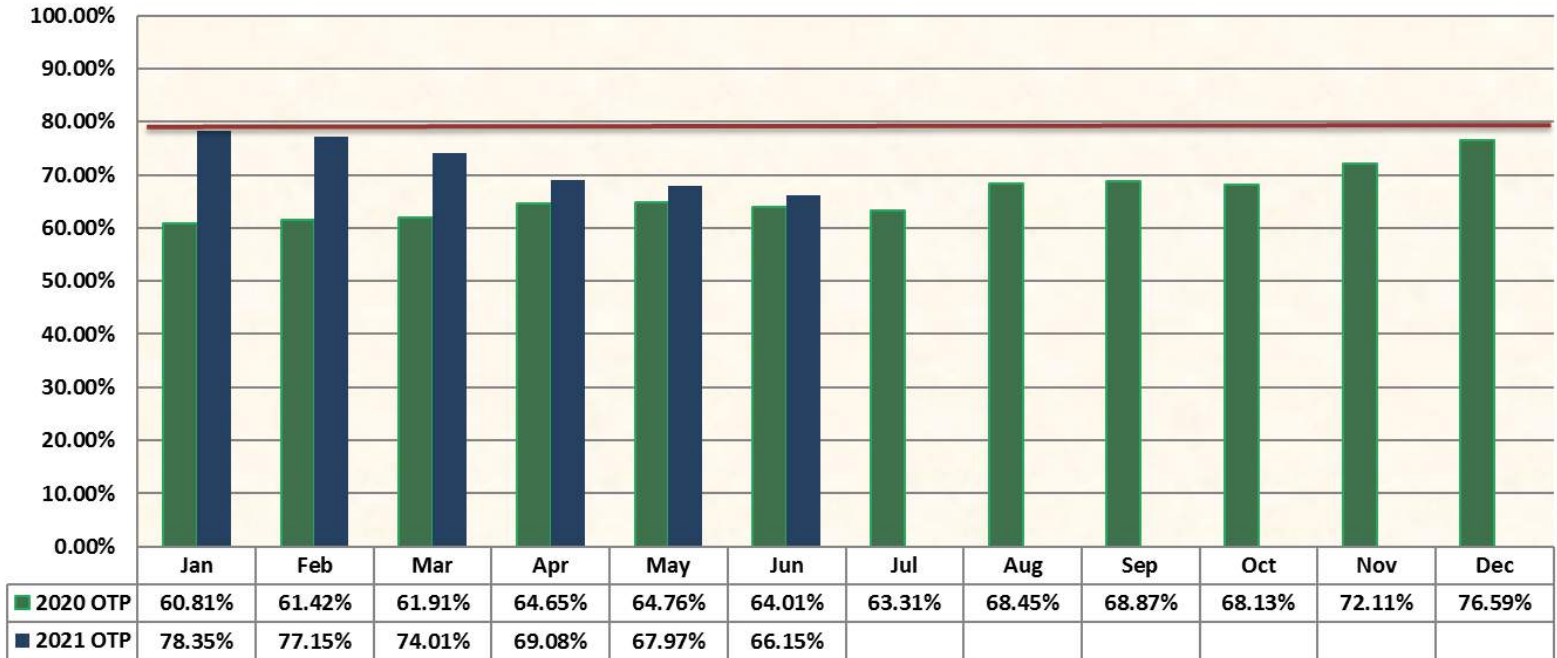
Monthly Ridership 2018-2021



	Jan	Feb	Mar	Apr	May	Jun	Jul	Aug	Sep	Oct	Nov	Dec
Ridership 2018	202,296	219,091	231,324	218,241	223,663	211,464	215,967	217,291	219,337	246,615	216,649	203,627
Ridership 2019	221,453	221,163	213,485	201,647	213,627	201,041	203,476	224,556	220,042	223,657	200,579	198,778
Ridership 2020 (COVID-19)	208,810	197,151	153,561	80,458	90,485	100,415	97,366	105,704	111,403	114,030	97,230	100,521
Ridership 2021 (COVID-19)	100,271	84,605	102,631	92,547	89,900	92,268						



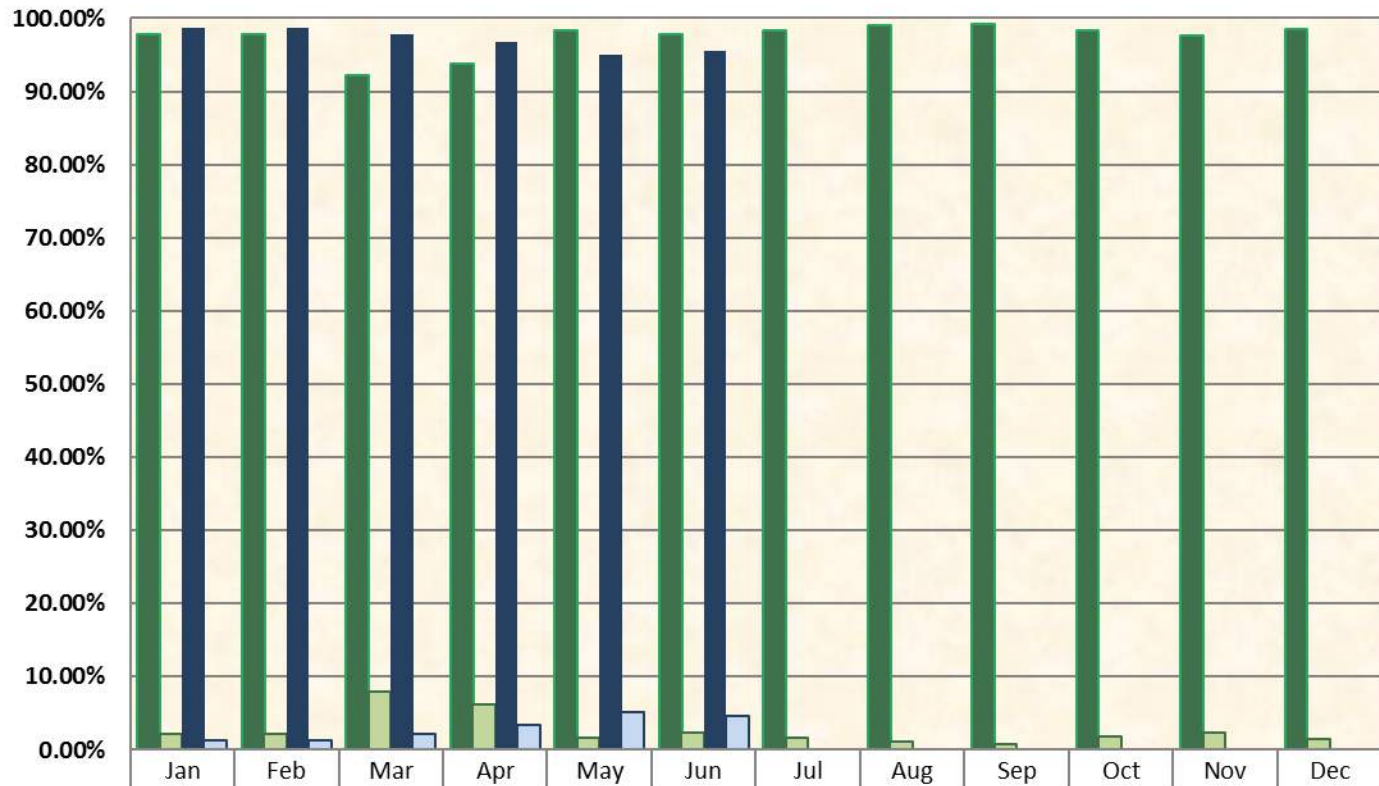
On-Time Performance 2020-2021



*Target 80% On-Time Performance

Note: On-Time performance is measured at scheduled timepoints which represent 4.89% of the total system bus stops

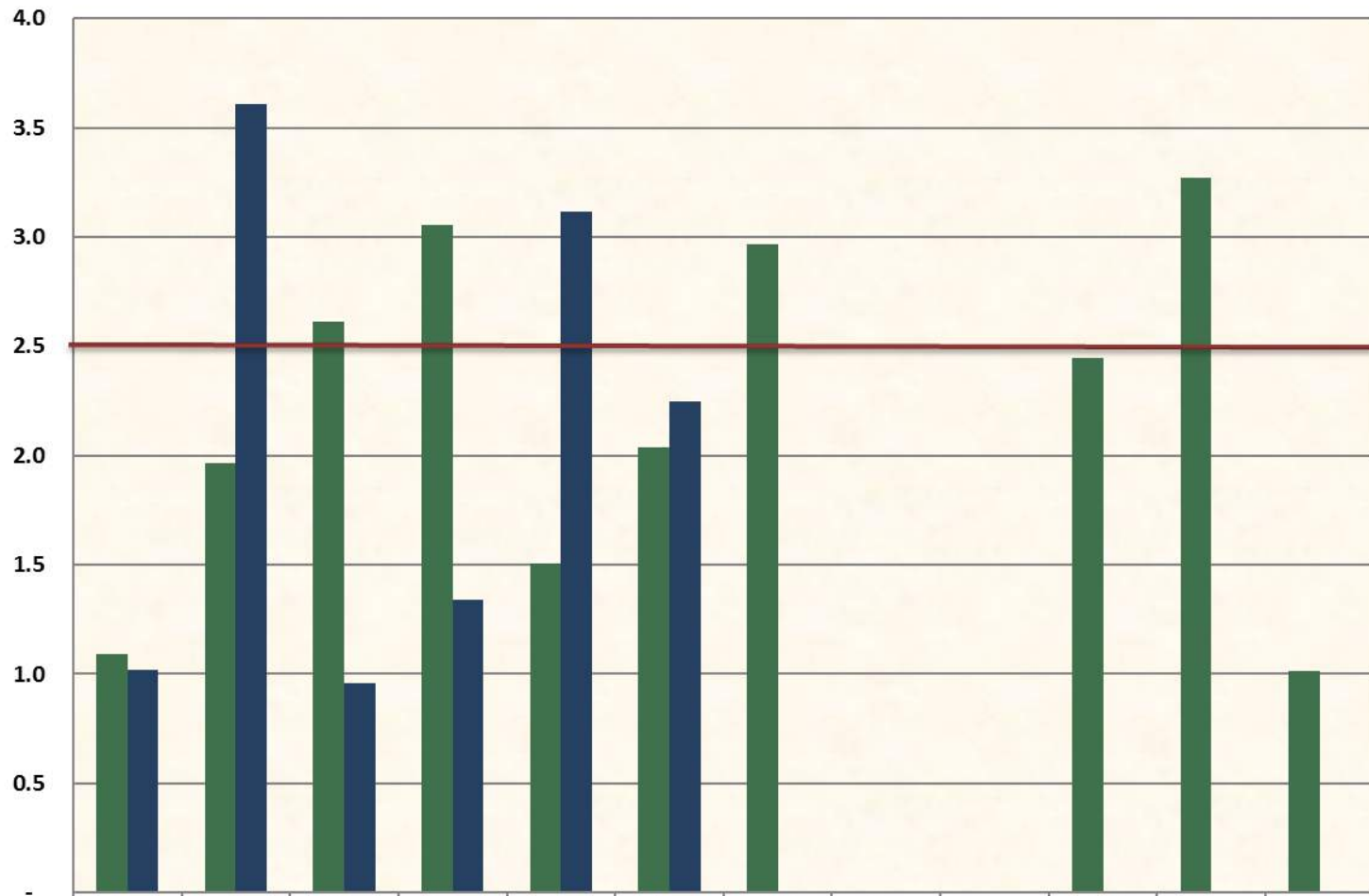
% Trips Operated 2020-2021



■ 2020 % Operated Trips	97.80%	97.89%	92.13%	93.76%	98.38%	97.71%	98.32%	98.97%	99.21%	98.24%	97.68%	98.49%
■ 2020 % Missed Trips	2.20%	2.11%	7.87%	6.24%	1.62%	2.29%	1.68%	1.03%	0.79%	1.76%	2.32%	1.51%
■ 2021 % Operated Trips	98.67%	98.64%	97.76%	96.67%	94.93%	95.44%						
■ 2021 % Missed Trips	1.33%	1.36%	2.24%	3.33%	5.07%	4.56%						



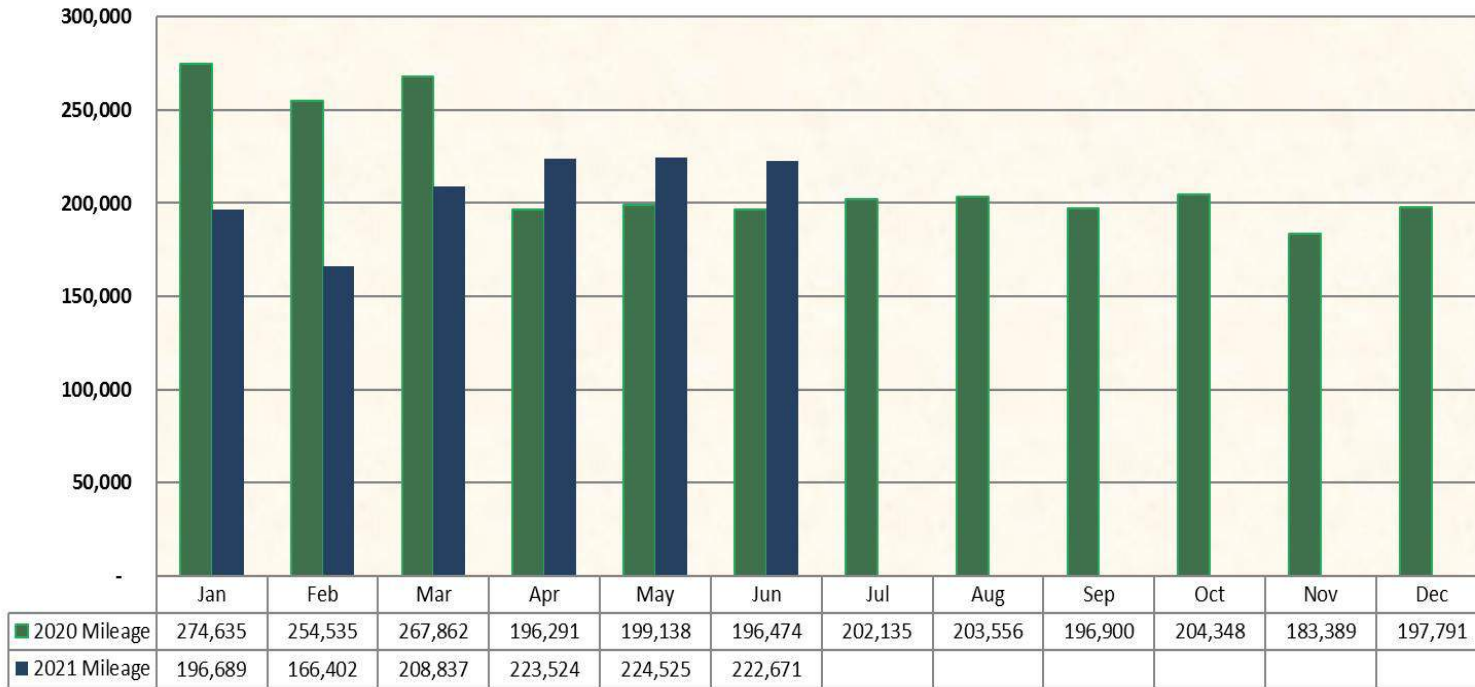
Preventable Accidents per 100,000 Miles 2020-2021



	Jan	Feb	Mar	Apr	May	Jun	Jul	Aug	Sep	Oct	Nov	Dec
■ 2020 Preventable Accidents	1.1	2.0	2.6	3.1	1.5	2.0	3.0	0	0	2.4	3.3	1.0
■ 2021 Prevventable Accidents	1.0	3.6	1.0	1.3	3.1	2.2	-	-	-	-	-	

*Target Below 2.5 Preventable Accidents Per 100,000 Miles

Mileage 2020-2021





Mean Miles Between Road Calls 2020-2021

