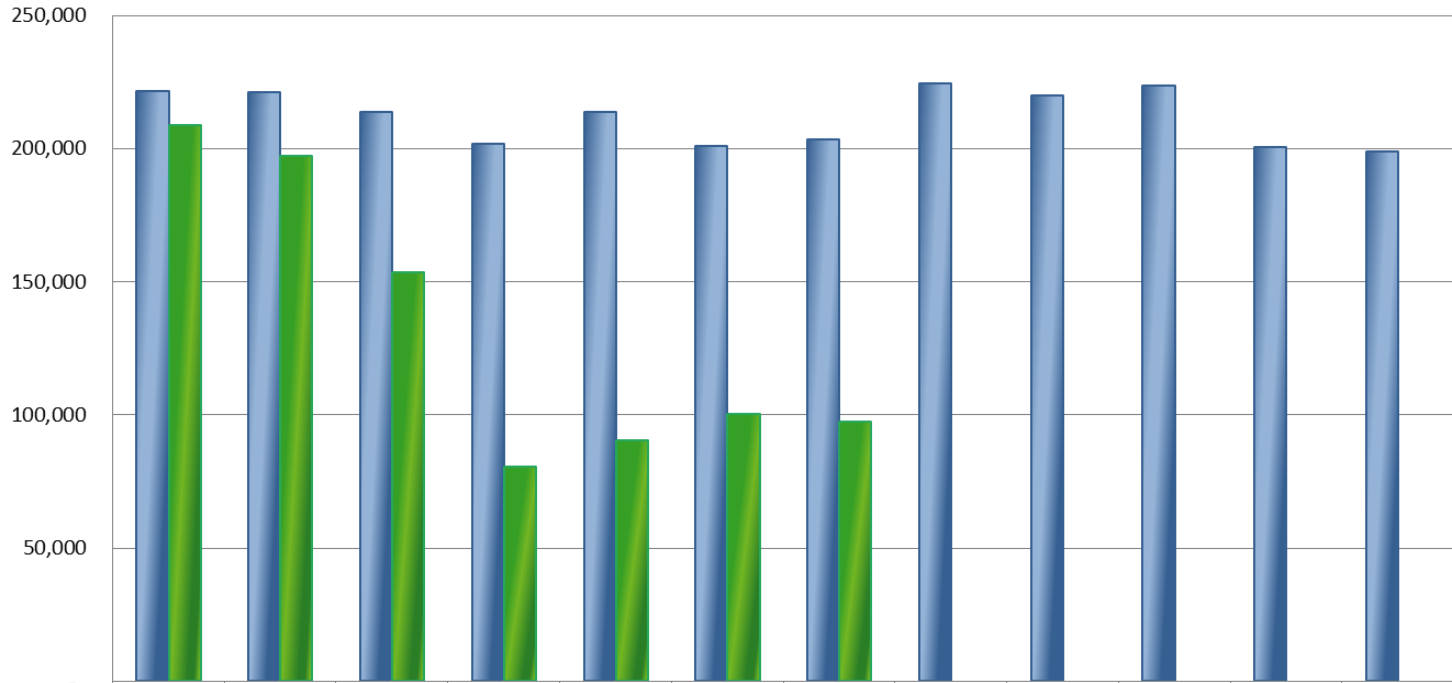


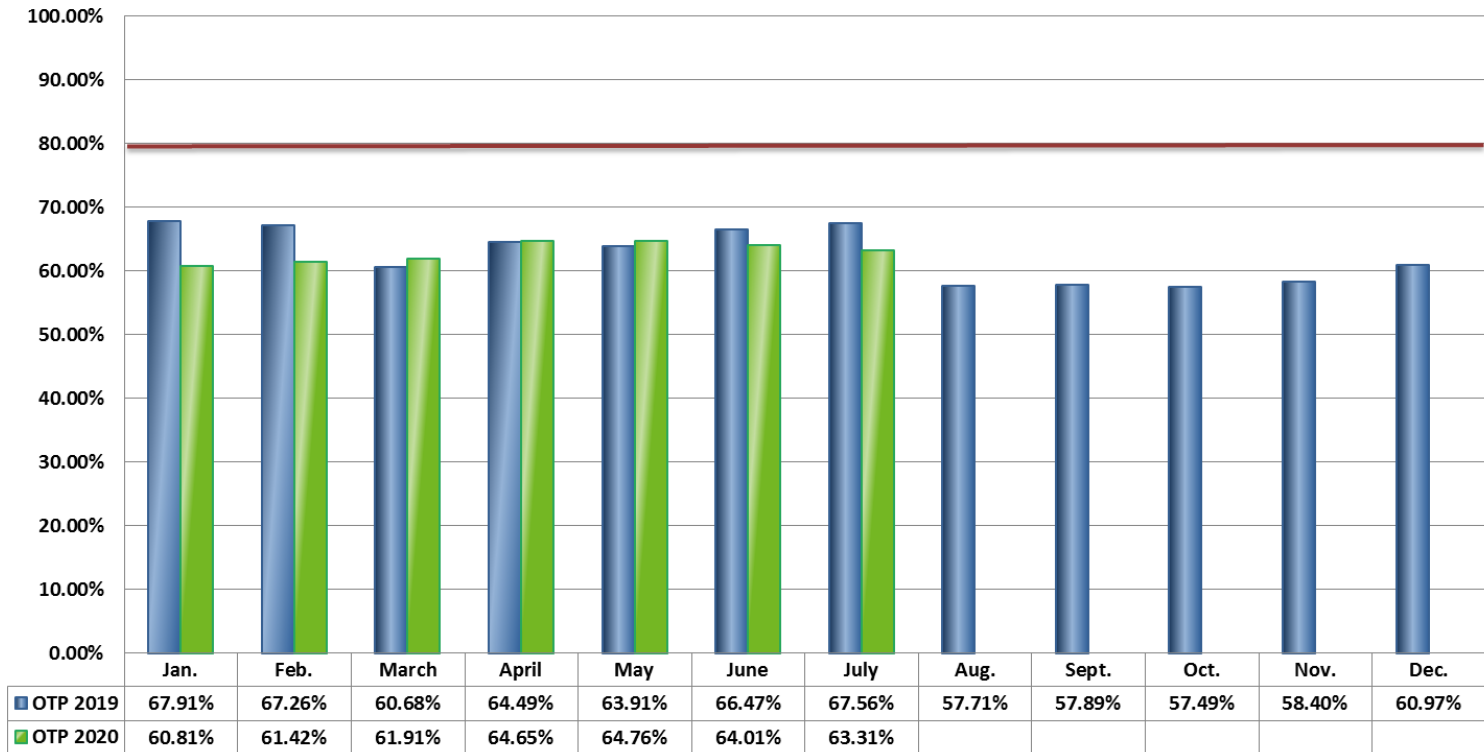
Ridership 2019-2020



	Jan.	Feb.	Mar.	April	May	June	July	Aug.	Sept.	Oct.	Nov.	Dec.
2019 Ridership	221,453	221,163	213,485	201,647	213,627	201,041	203,476	224,556	220,042	223,657	200,579	198,778
2020 Ridership	208,810	197,151	153,561	80,458	90,485	100,415	97,366					



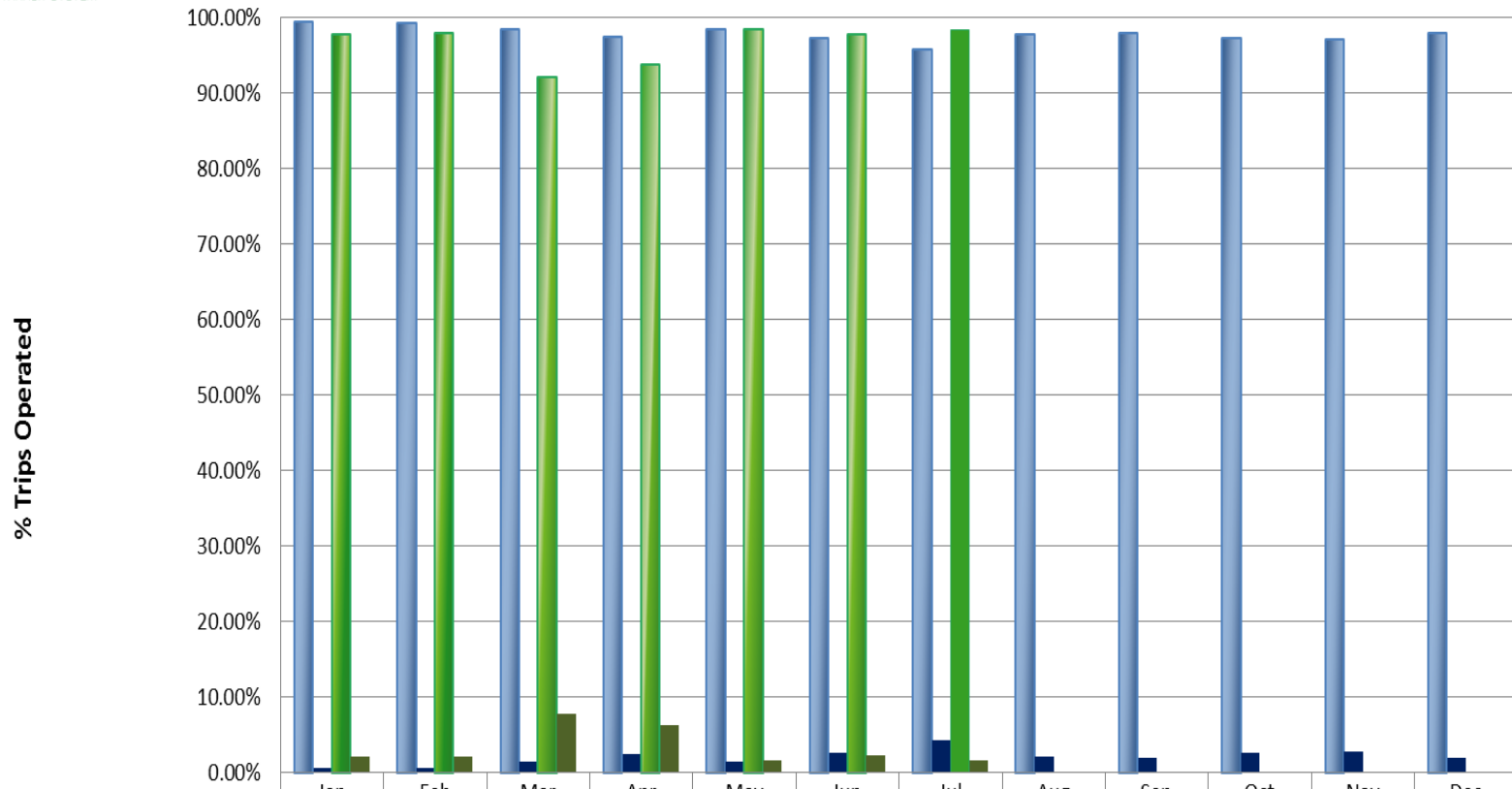
On-Time Performance 2019-2020



***Target 80% On-Time Performance**

Note: On-Time performance is measured at scheduled timepoints which represent 6.78% of the total system bus stops

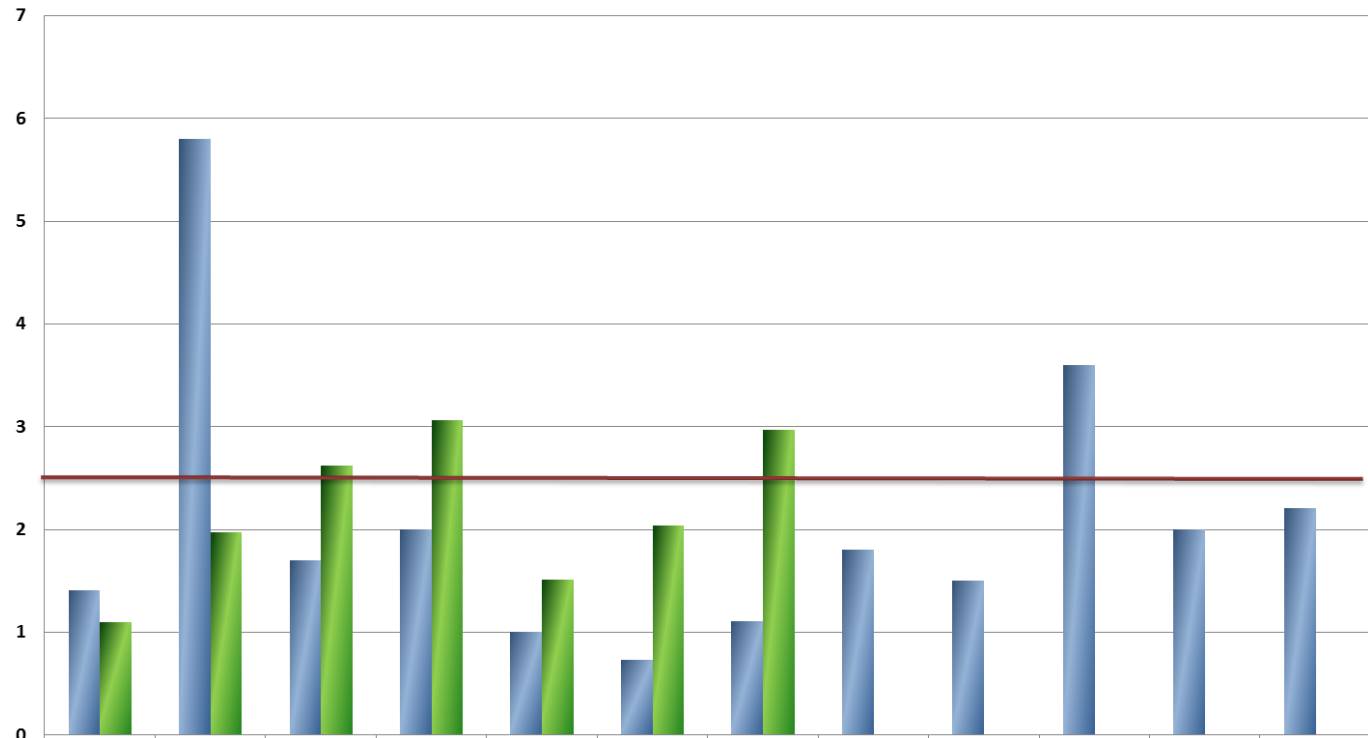
% Trips Operated 2019-2020



	Jan	Feb	Mar	Apr	May	Jun	Jul	Aug	Sep	Oct	Nov	Dec
2019 % of Scheduled Bus Trips Operated	99.40%	99.30%	98.50%	97.50%	98.50%	97.30%	95.73%	97.80%	98.00%	97.27%	97.11%	97.97%
2019 % Missed Trips	0.60%	0.70%	1.50%	2.50%	1.50%	2.70%	4.27%	2.20%	2.00%	2.73%	2.89%	2.03%
2020 % of Scheduled Bus Trips Operated	97.80%	97.89%	92.13%	93.76%	98.38%	97.71%	98.32%					
2020 % Missed Trips	2.20%	2.11%	7.87%	6.24%	1.62%	2.29%	1.68%					



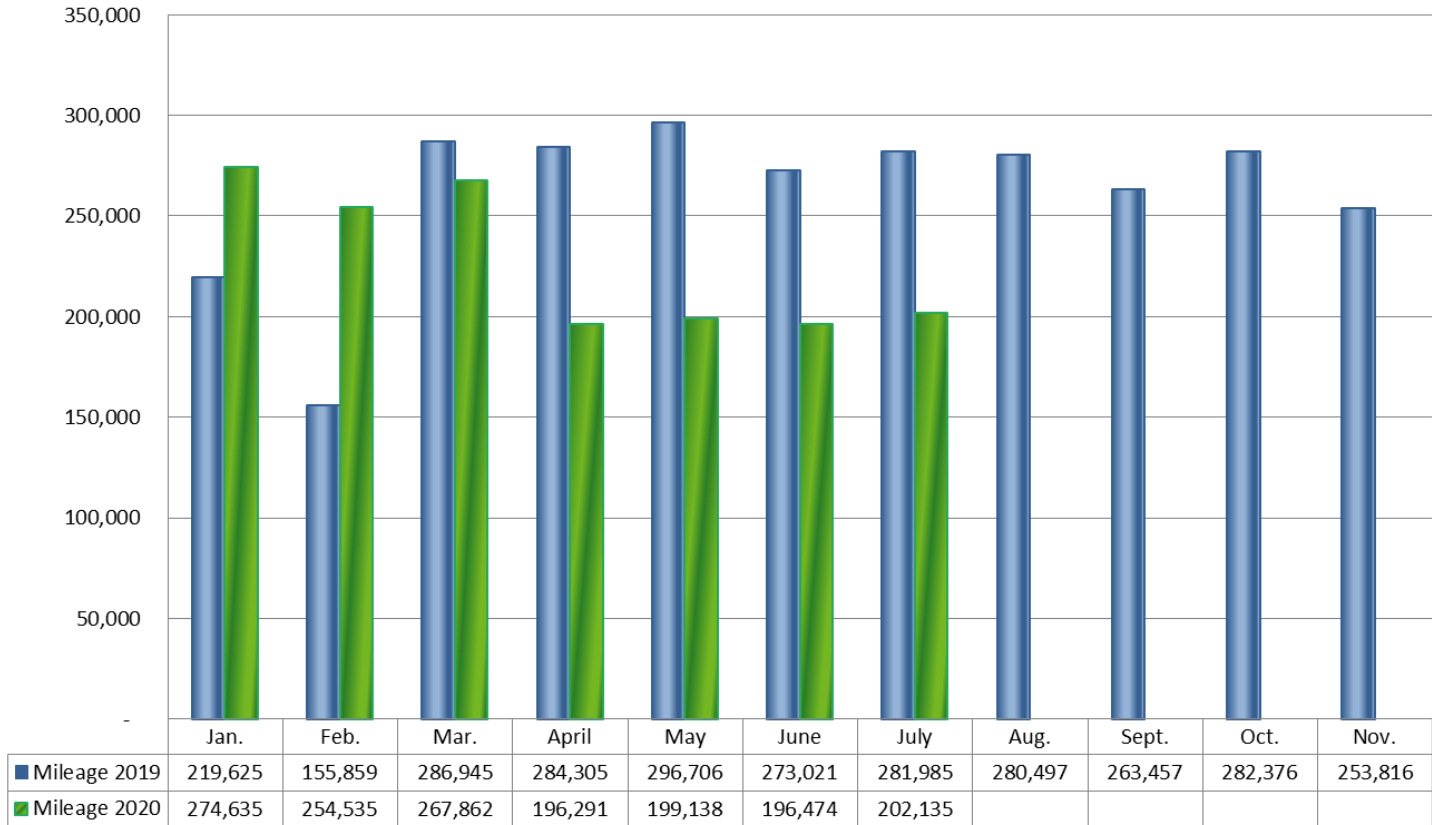
Preventable Accidents per 100,000 Miles 2019-2020



	Jan.	Feb.	March	April	May	June	July	Aug.	Sept.	Oct.	Nov.	Dec.
■ Preventable Accidents 2019	1.4	5.8	1.7	2.0	1.0	0.73	1.1	1.8	1.5	3.6	2.0	2.2
■ Preventable Accidents 2020	1.1	2.0	2.6	3.1	1.5	2.0	3.0					

*Target 2.5 Preventable Accidents Per 100,000 Miles

Mileage 2019-2020





Mean Miles Between Road Calls 2019-2020

