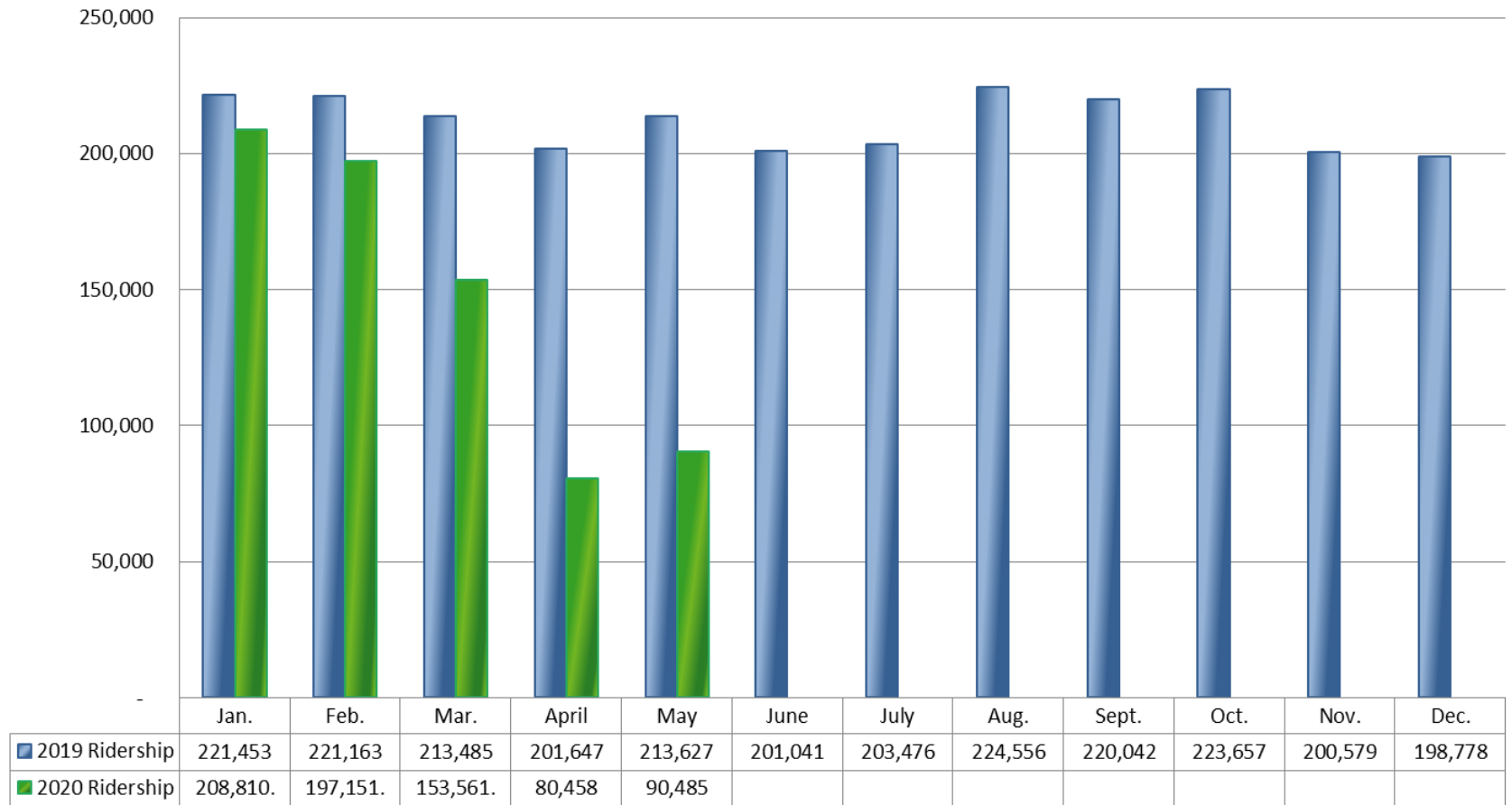
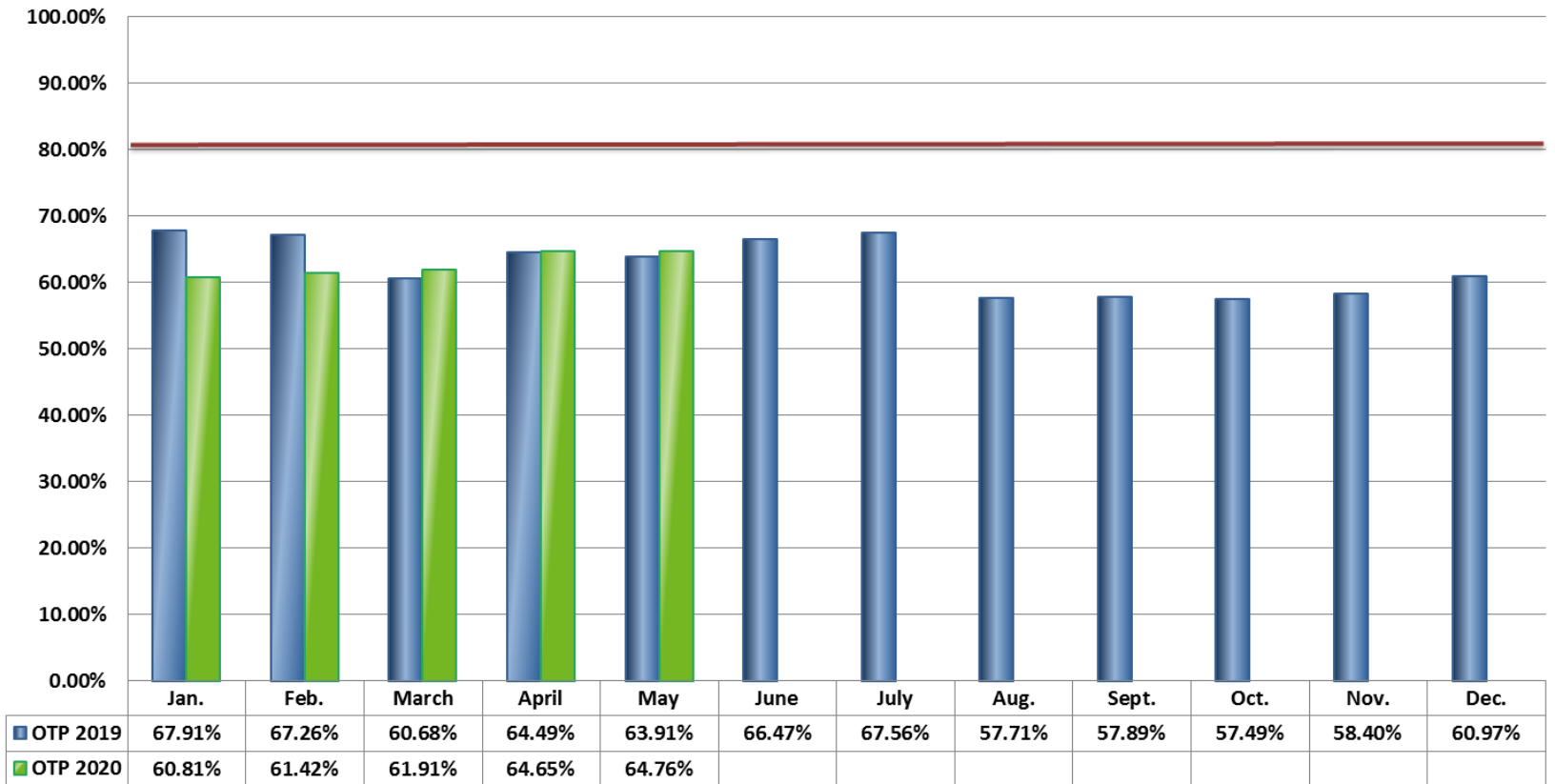


## Ridership 2019-2020





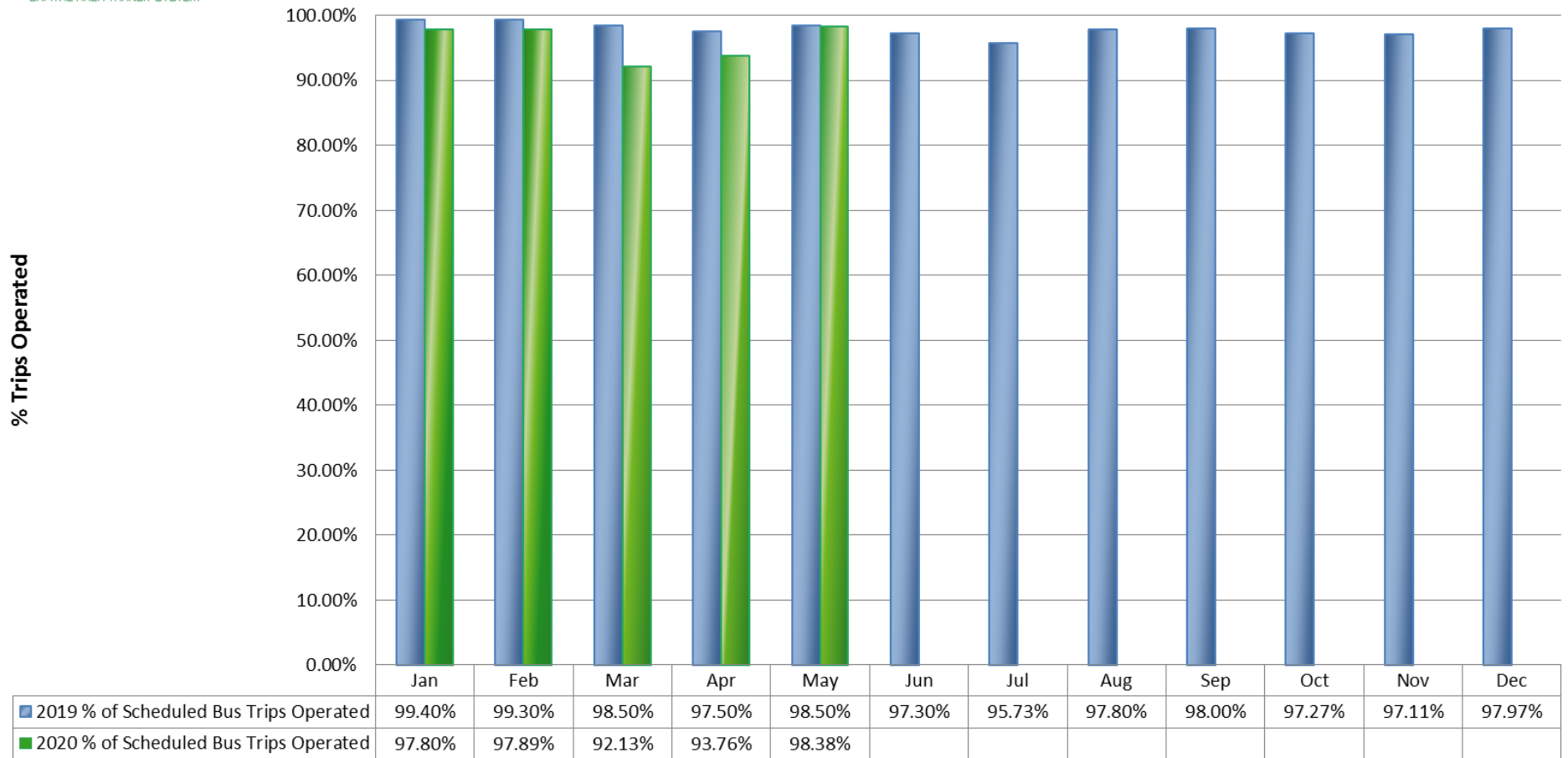
## On-Time Performance 2019-2020



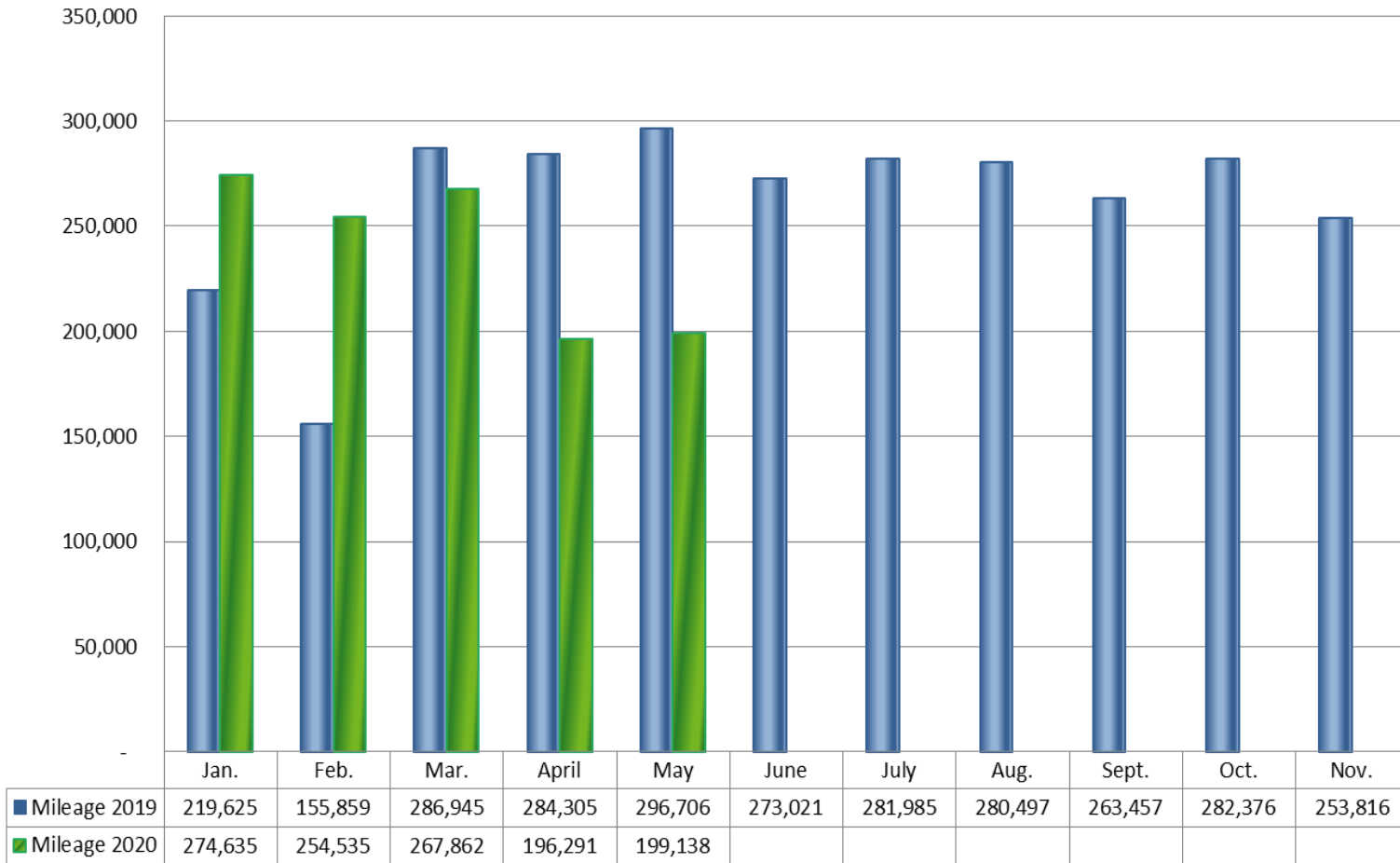
**\*Target 80% On-Time Performance**

*Note: On-Time performance is measured at scheduled timepoints which represent 6.78% of the total system bus stops*

### % Trips Operated 2019-2020

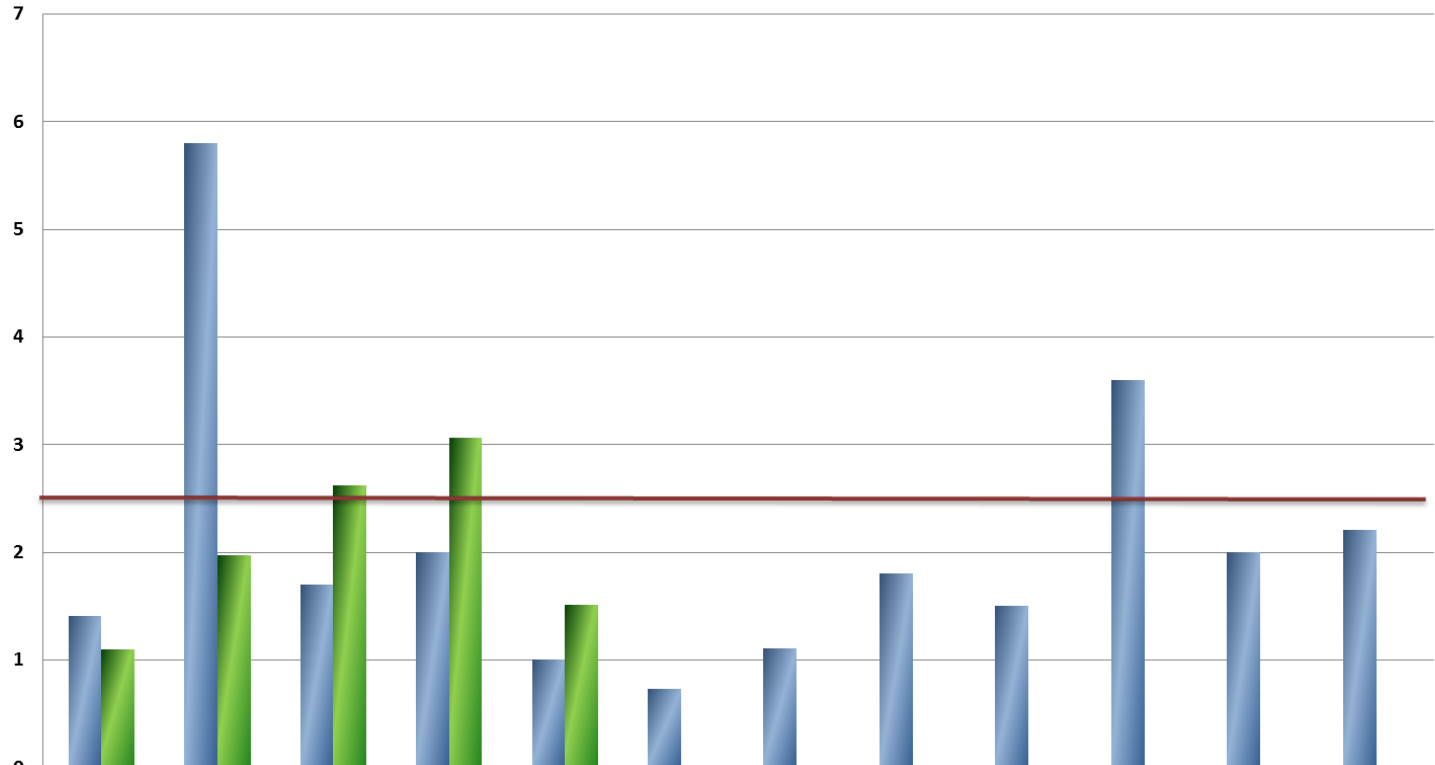


## Mileage 2019-2020





## Preventable Accidents per 100,000 Miles 2019-2020

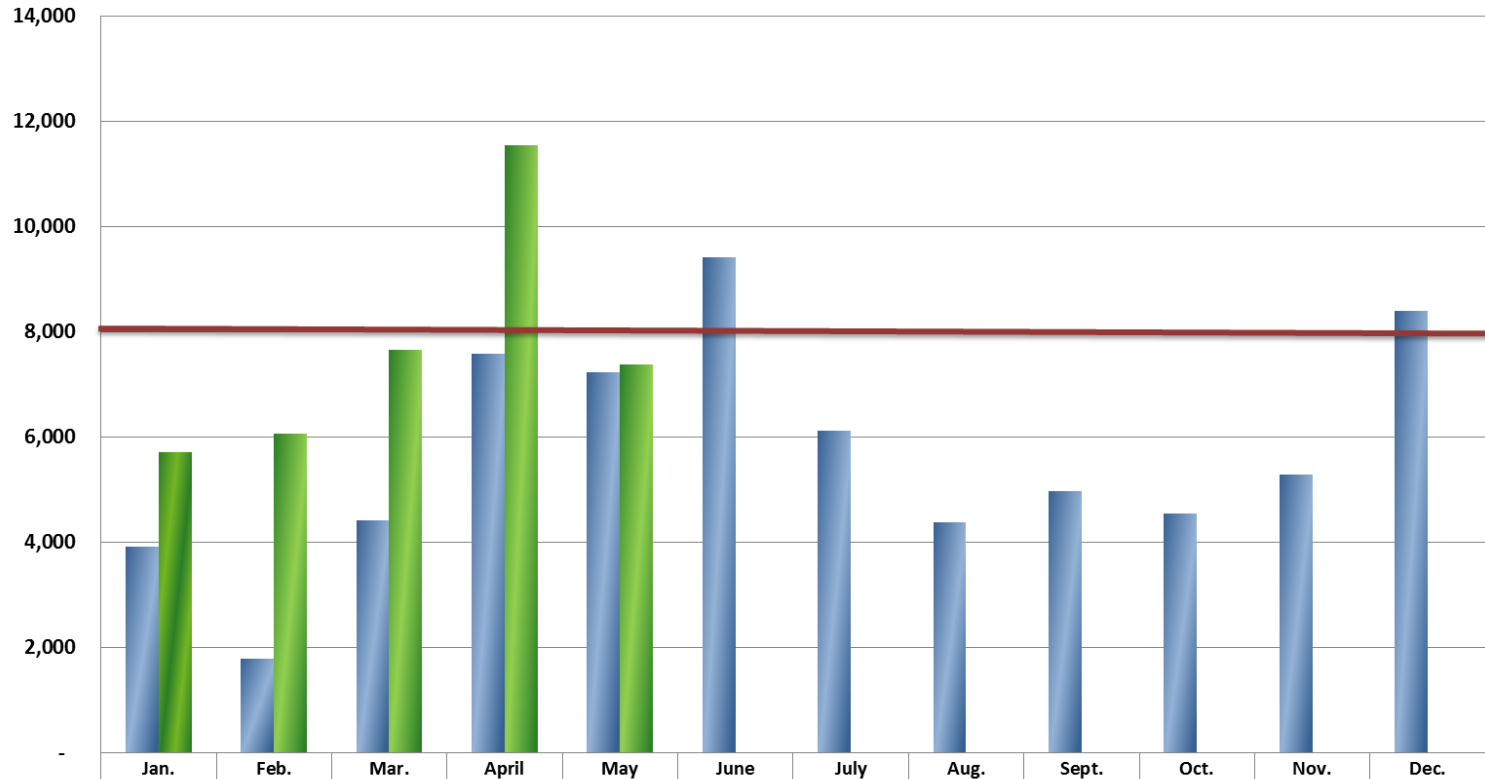


	Jan.	Feb.	March	April	May	June	July	Aug.	Sept.	Oct.	Nov.	Dec.
■ Preventable Accidents 2019	1.4	5.8	1.7	2.0	1.0	0.73	1.1	1.8	1.5	3.6	2.0	2.2
■ Preventable Accidents 2020	1.1	2.0	2.6	3.1	1.5							

\*Target 2.5 Preventable Accidents Per 100,000 Miles



## Mean Miles Between Road Calls 2019-2020



	Jan.	Feb.	Mar.	April	May	June	July	Aug.	Sept.	Oct.	Nov.	Dec.
■ 2019 Mean Miles Between Road Calls	3,922	1,792	4,415	7,583	7,237	9,415	6,130	4,383	4,971	4,554	5,288	8,411
■ 2020 Mean Miles Between Road Calls	5,722	6,060	7,653	11,547	7,375	-	-	-	-	-	-	-