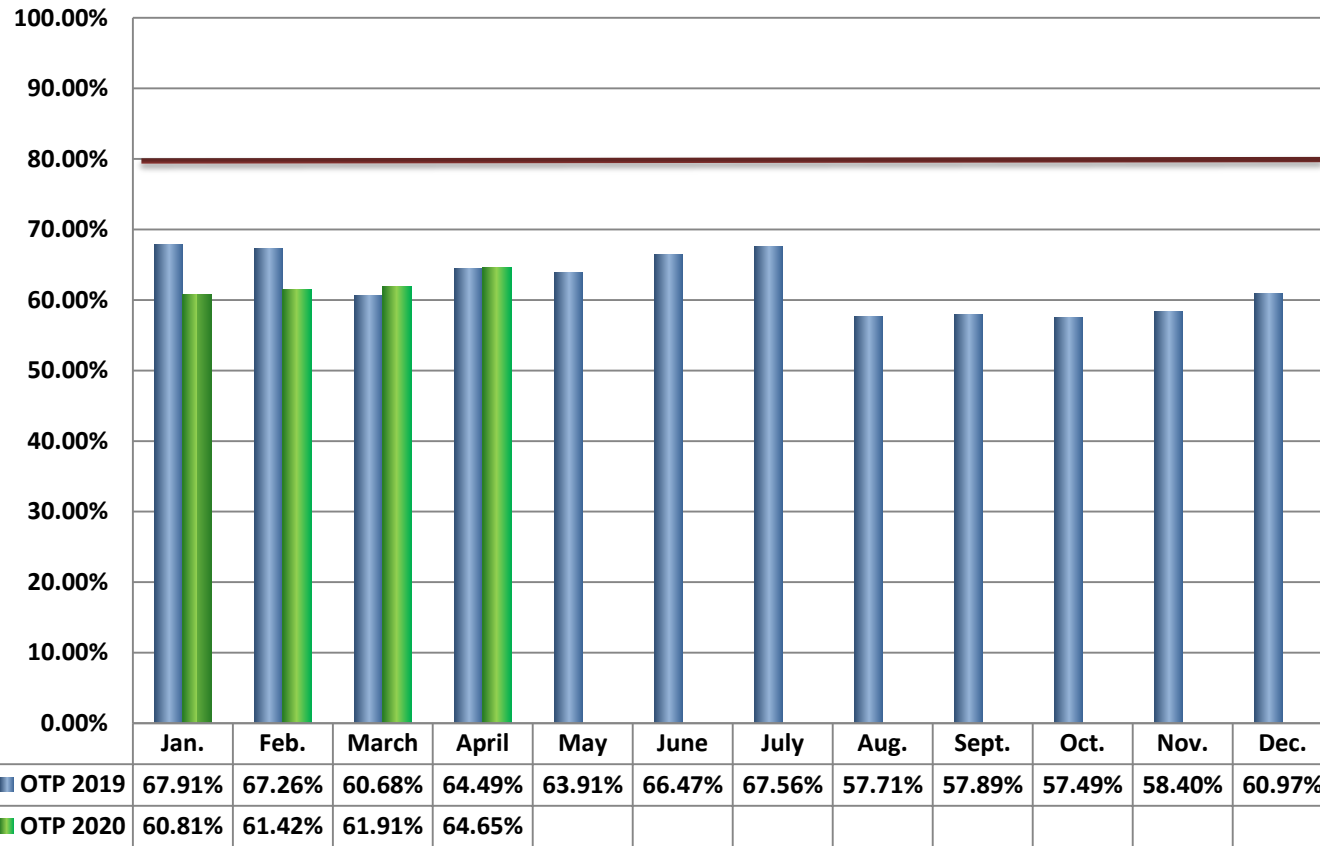




## On-Time Performance

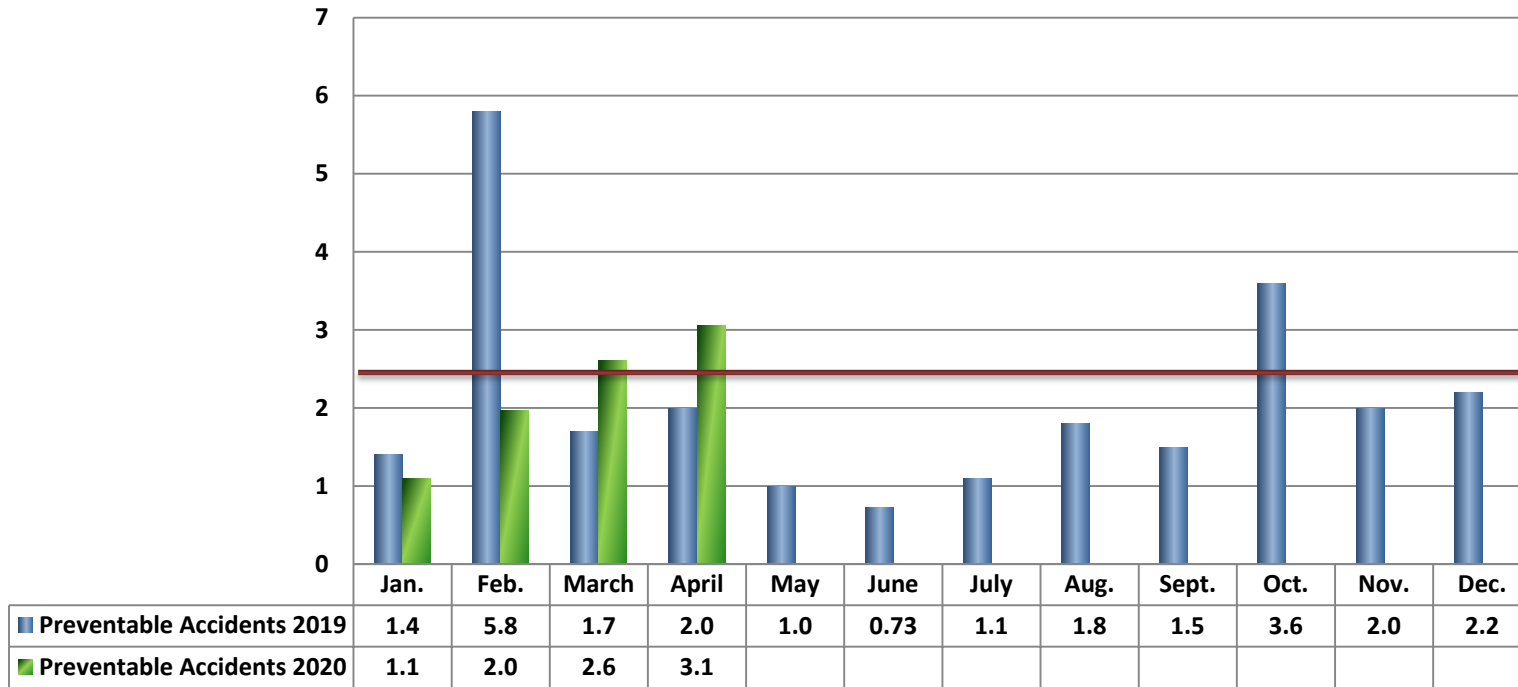


**\*Target 80% On-Time Performance**

*Note: On-Time performance is measured at scheduled timepoints which represent 6.78% of the total system bus stops*

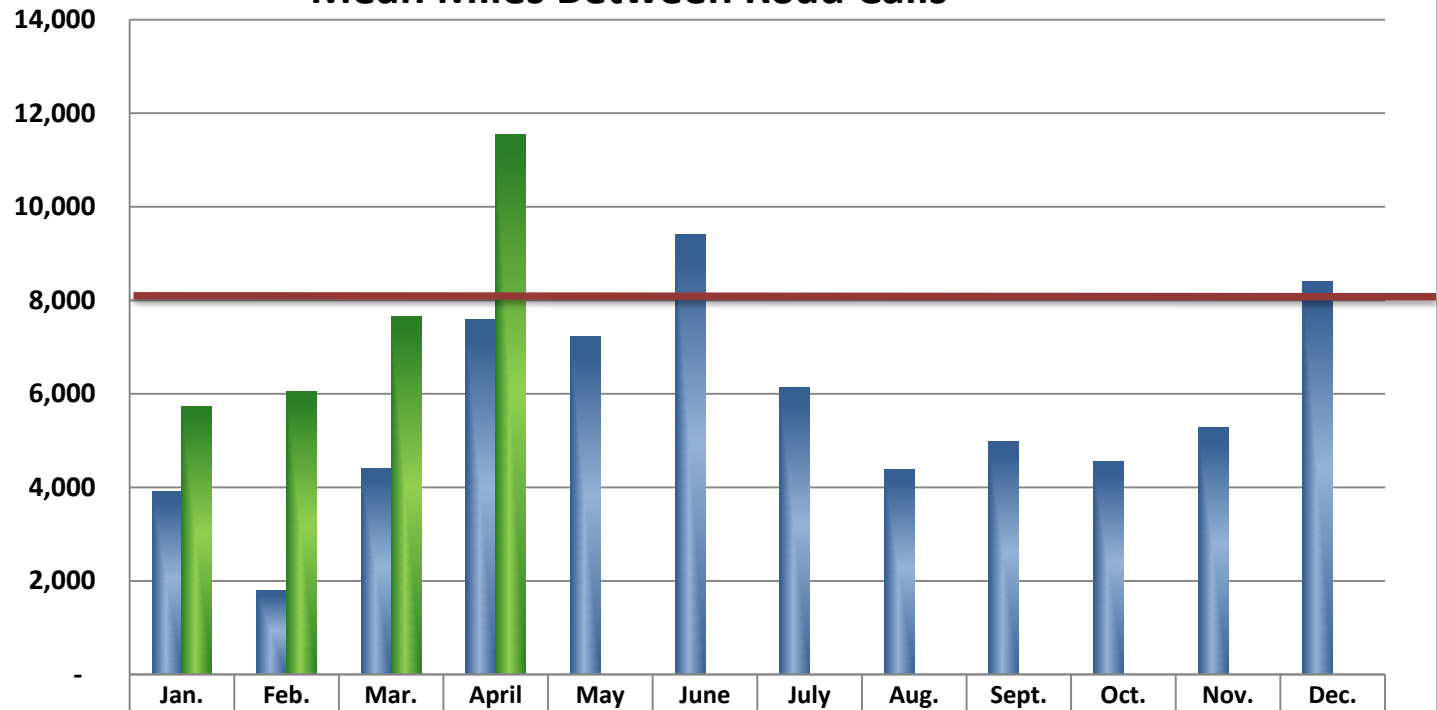


## Preventable Accidents per 100,000 Miles



\*Target 2.5 Preventable Accidents Per 100,000 Miles

## Mean Miles Between Road Calls



■ 2019 Mean Miles Between Road Calls

■ 2020 Mean Miles Between Road Calls

Jan.	Feb.	Mar.	April	May	June	July	Aug.	Sept.	Oct.	Nov.	Dec.
3,922	1,792	4,415	7,583	7,237	9,415	6,130	4,383	4,971	4,554	5,288	8,411
5,722	6,060	7,653	11,547	-	-	-	-	-	-	-	-