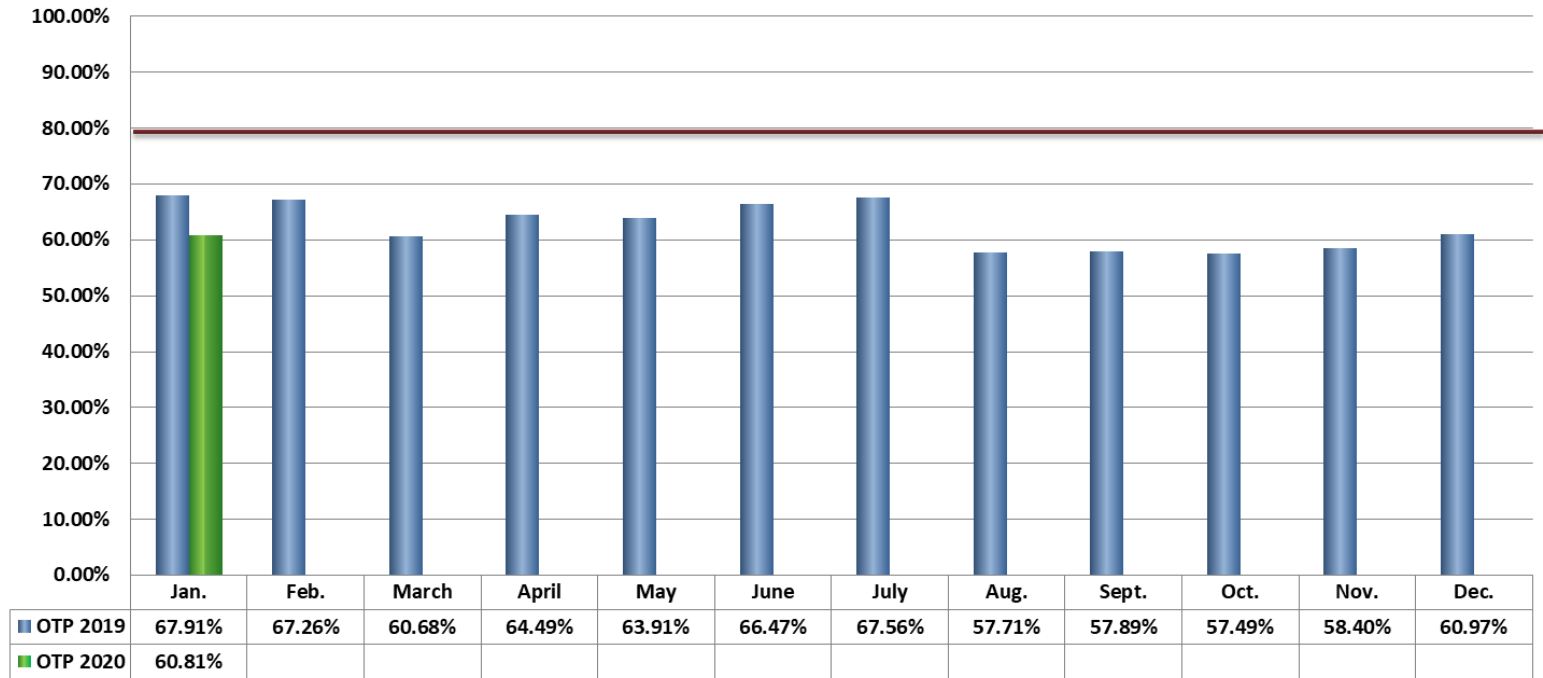


On-Time Performance

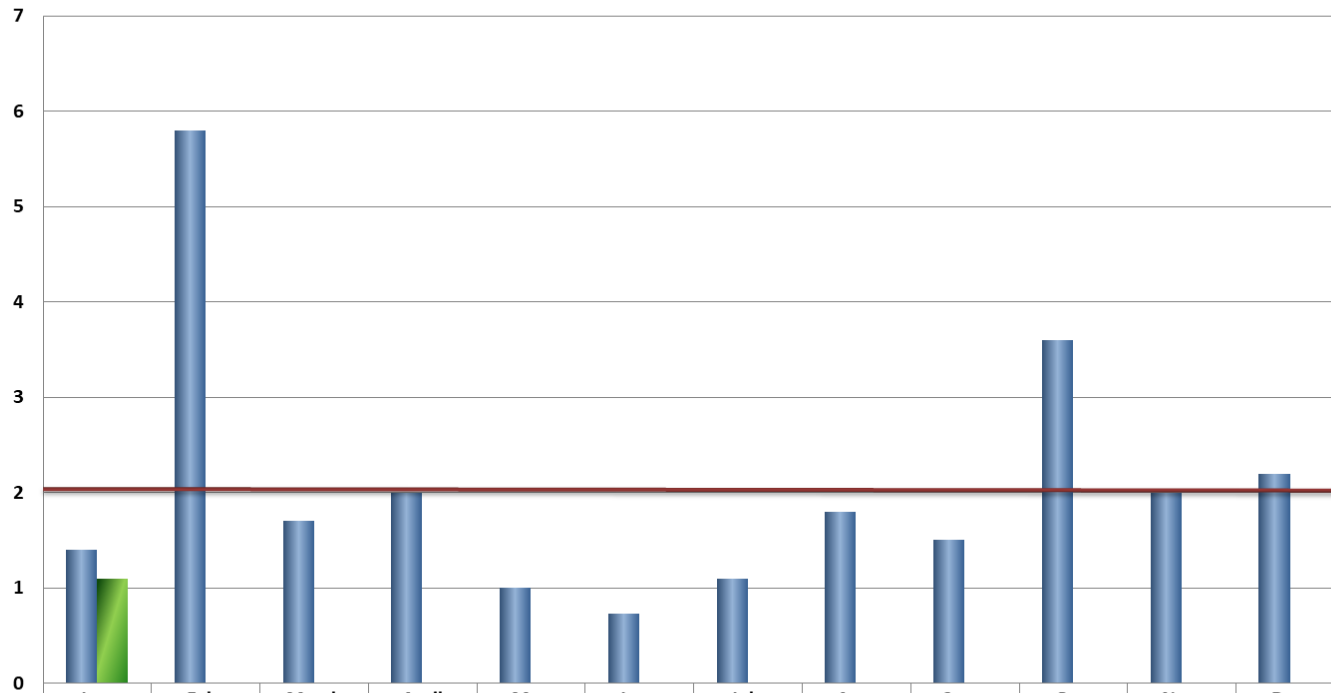


***Target 80% On-Time Performance**

Note: On-Time performance is measured at scheduled timepoints which represent 6.78% of the total system bus stops



Preventable Accidents per 100,000 Miles



	Jan.	Feb.	March	April	May	June	July	Aug.	Sept.	Oct.	Nov.	Dec.
■ Preventable Accidents 2019	1.4	5.8	1.7	2.0	1.0	0.73	1.1	1.8	1.5	3.6	2.0	2.2
■ Preventable Accidents 2020	1.1											

*Target 2.5 Preventable Accidents Per 100,000 Miles

