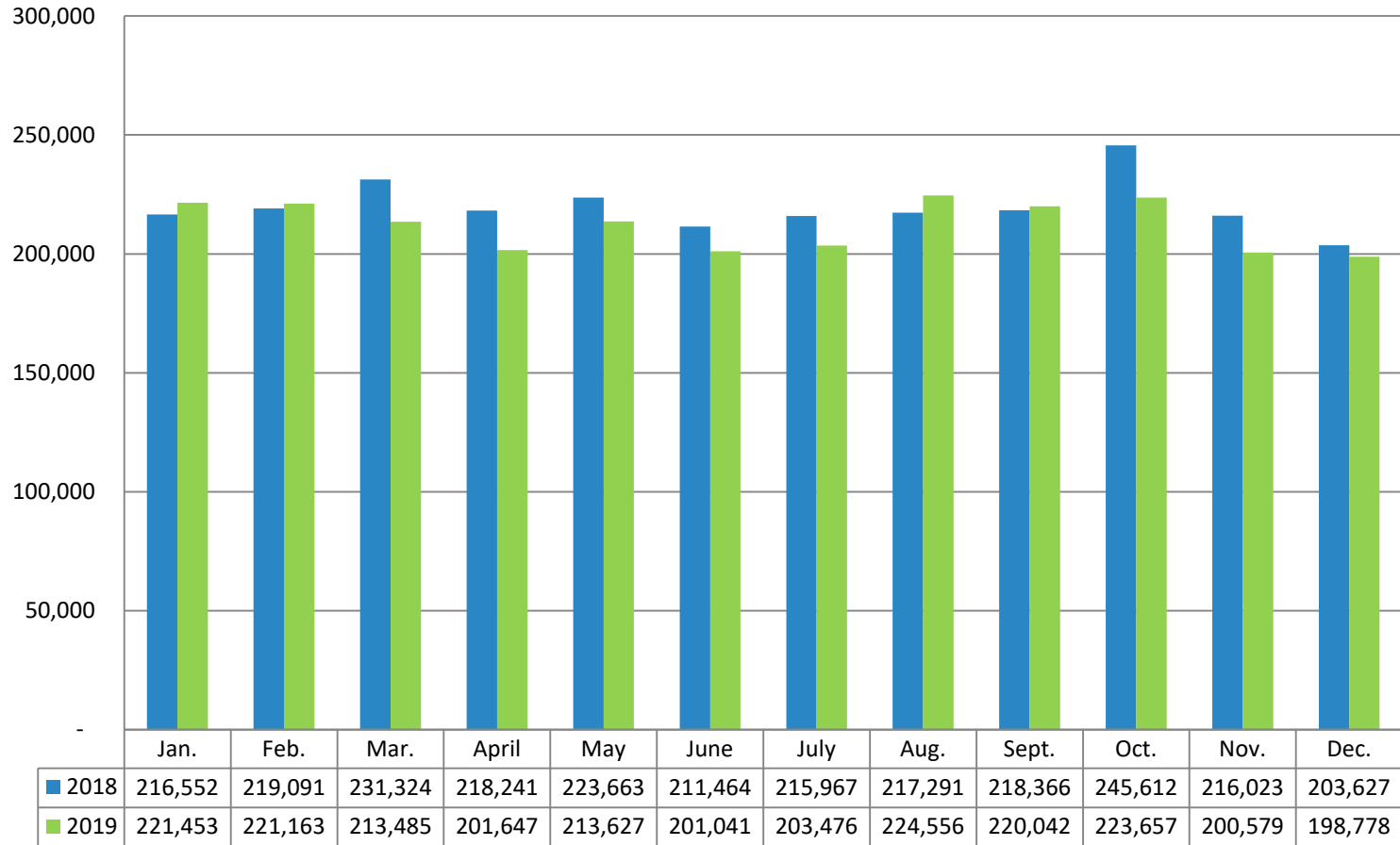
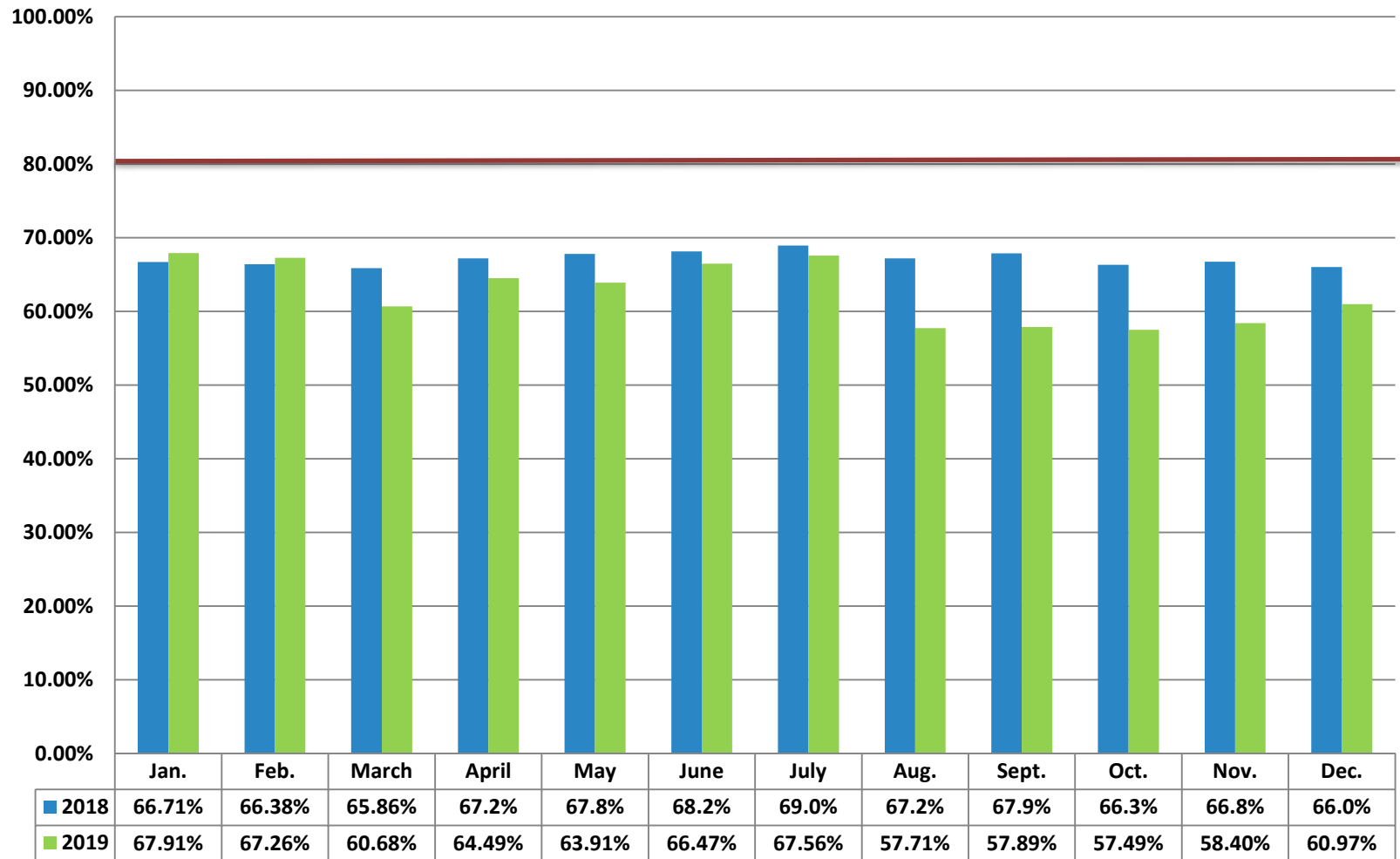


Ridership



On-Time Performance



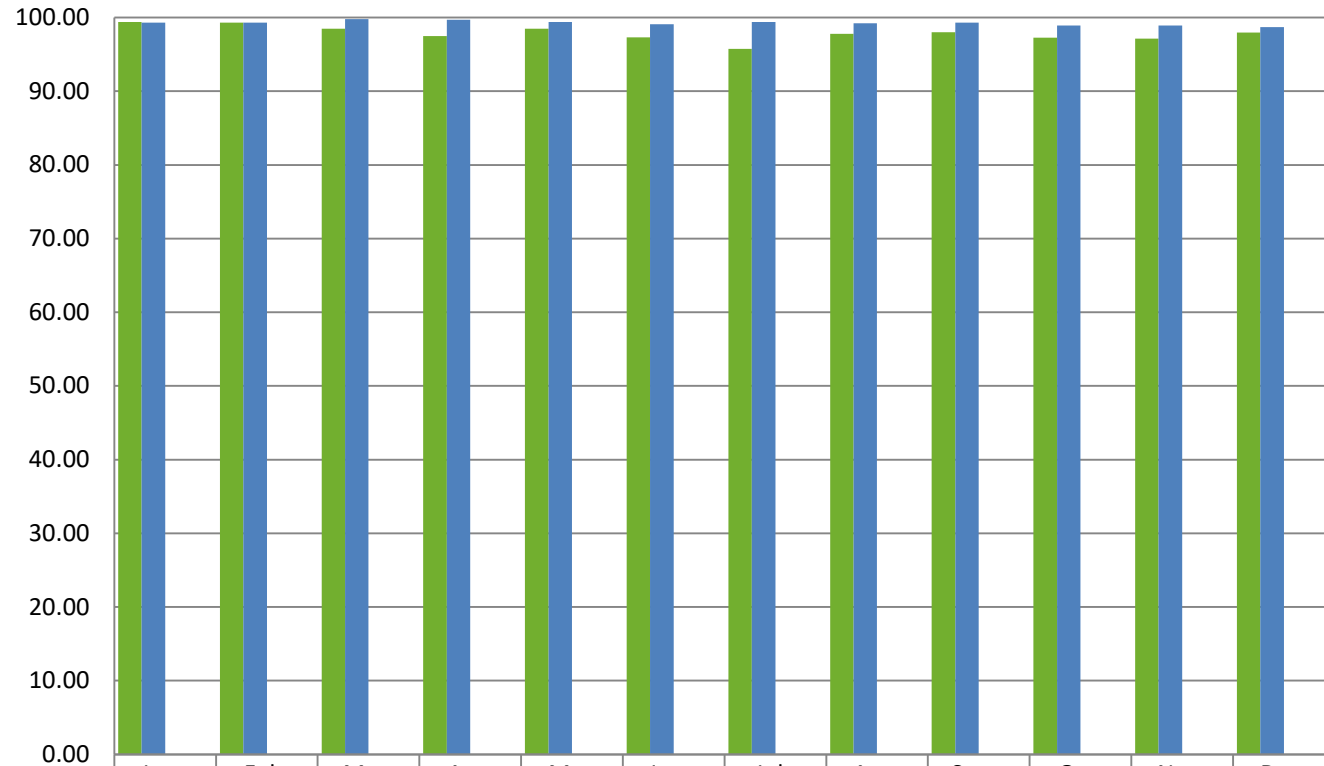
***Target 80% On-Time Performance**

Note: On-Time performance is measured at scheduled timepoints which represent 6.78% of the total system bus stops



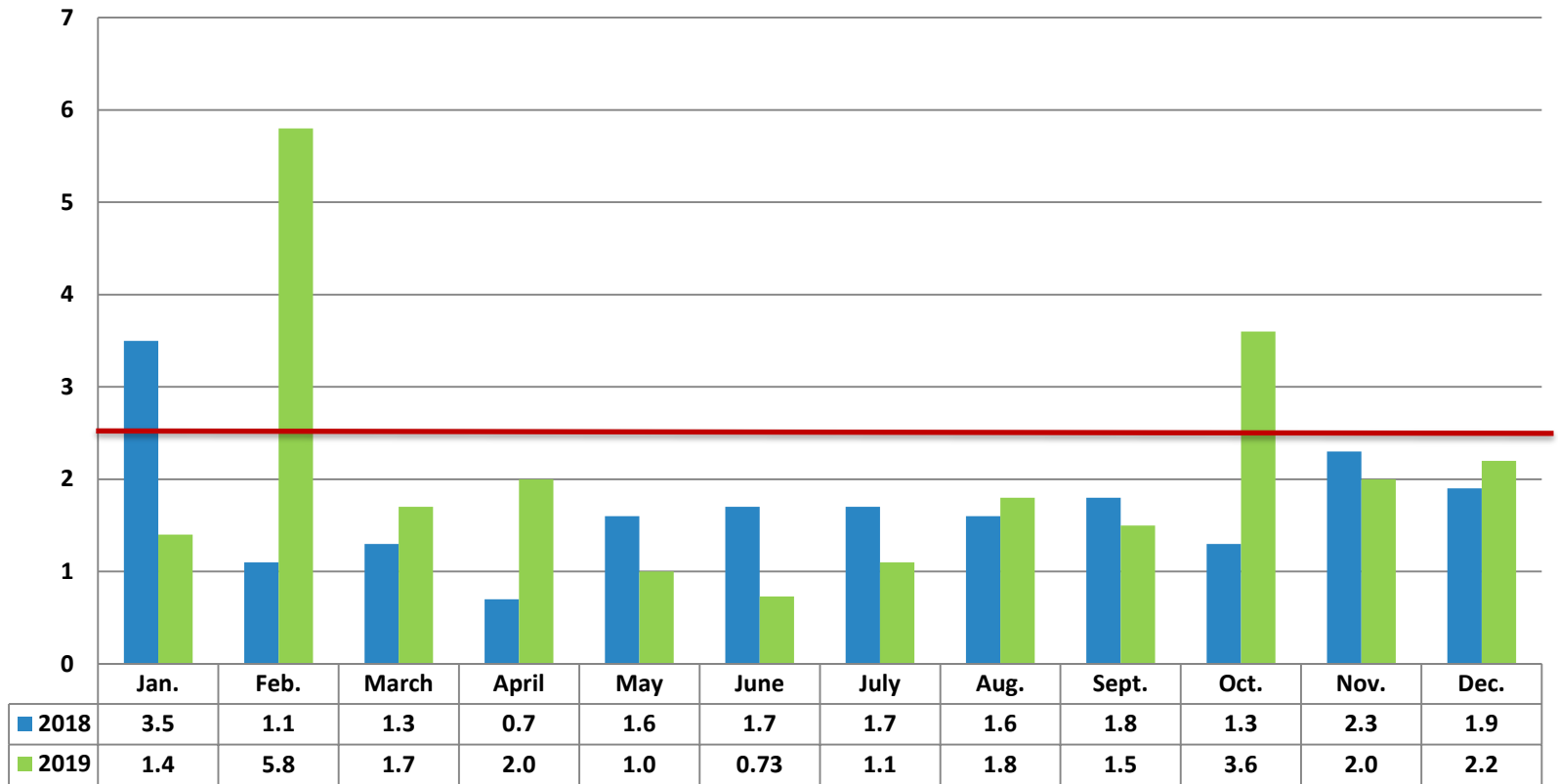
% Trips Operated 2018-2019

Percentage of Trips Operated



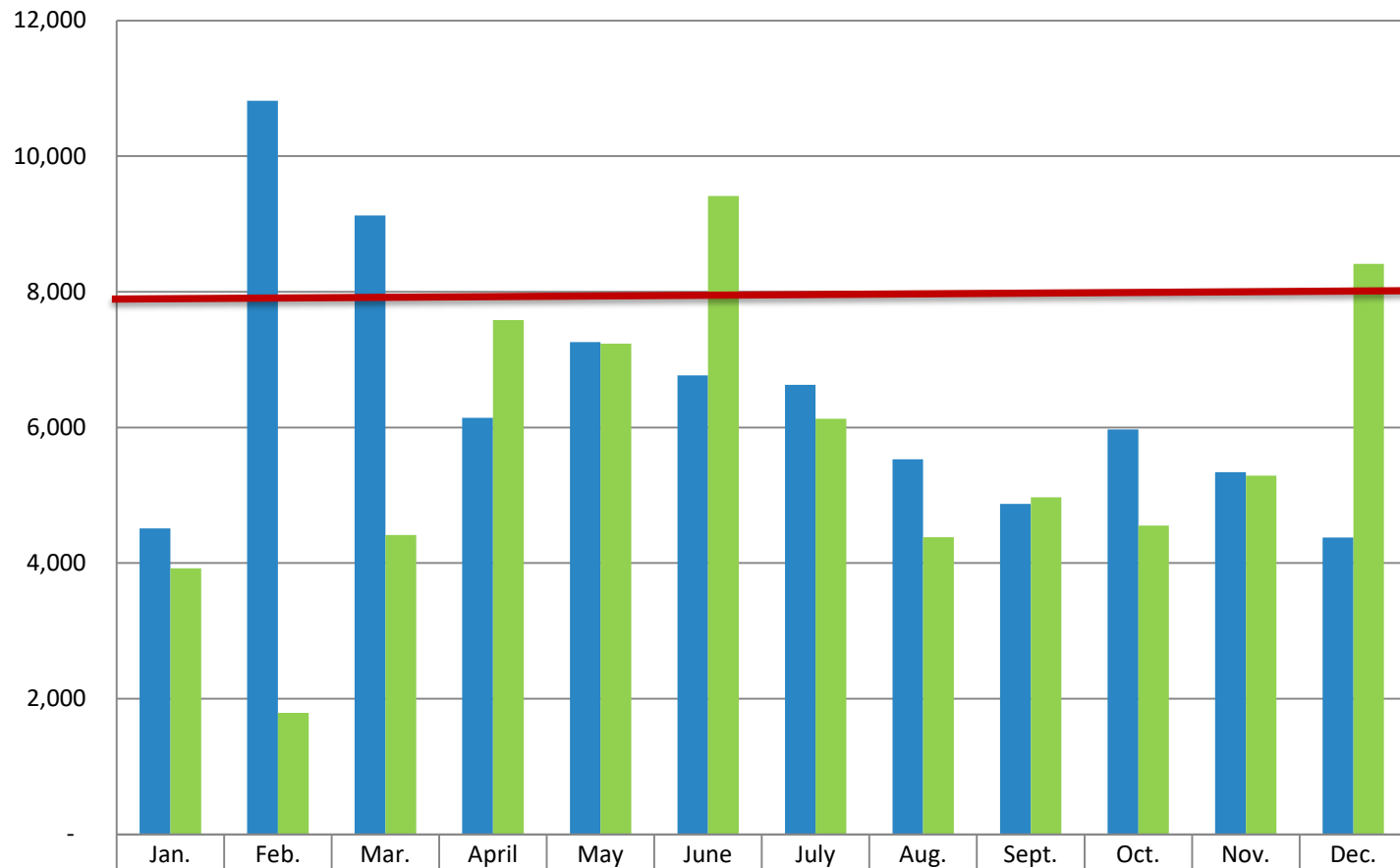
■ 2019 % of Scheduled Bus Trips Operated	99.40	99.30	98.50	97.50	98.50	97.30	95.73	97.80	98.00	97.27	97.11	97.97
■ 2018 % of Scheduled Bus Trips Operated	99.30	99.30	99.80	99.70	99.40	99.10	99.40	99.20	99.30	98.90	98.90	98.70
2018 Cancelled Bus Trips	229.5	240.3	66	93	201	293	194	264	216	326	339.4	385
2019 Cancelled Bus Trips	173.6	200.35	511.3	827.45	498.25	889.75	1,419.	746.75	674.25	907.10	960.25	675.00

Preventable Accidents per 100,000 Miles



*Target 2.5 Preventable Accidents Per 100,000 Miles

Mean Miles Between Road Calls



■ 2018 Mean Miles Bet. Road Calls	Jan.	Feb.	Mar.	April	May	June	July	Aug.	Sept.	Oct.	Nov.	Dec.
	4,511	10,818	9,125	6,141	7,259	6,768	6,628	5,533	4,871	5,971	5,341	4,378
■ 2019 Mean Miles Bet. Road Calls	Jan.	Feb.	Mar.	April	May	June	July	Aug.	Sept.	Oct.	Nov.	Dec.
	3,922	1,792	4,415	7,583	7,237	9,414.5	6,130.1	4,382.7	4,970.8	4,554.5	5,287.80	8,410.6