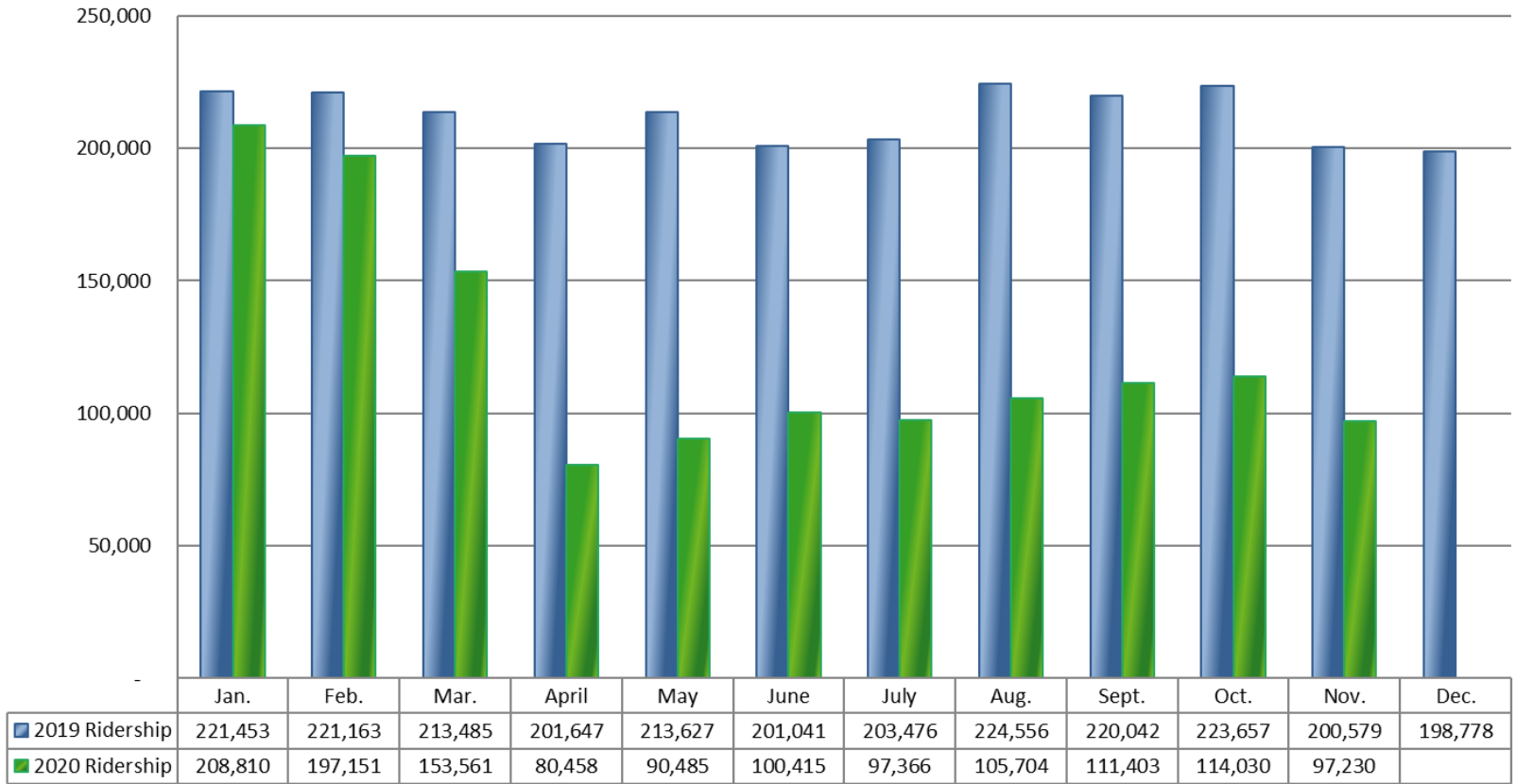
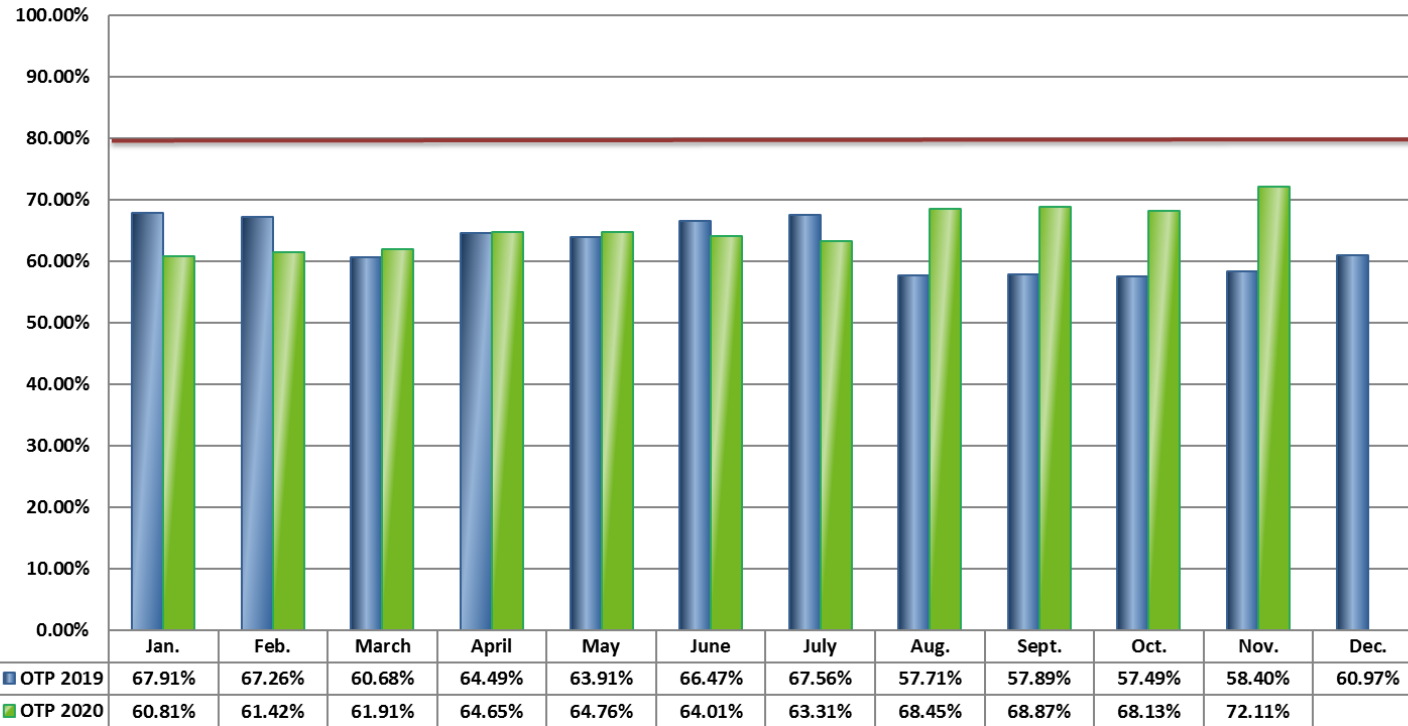


Ridership 2019-2020



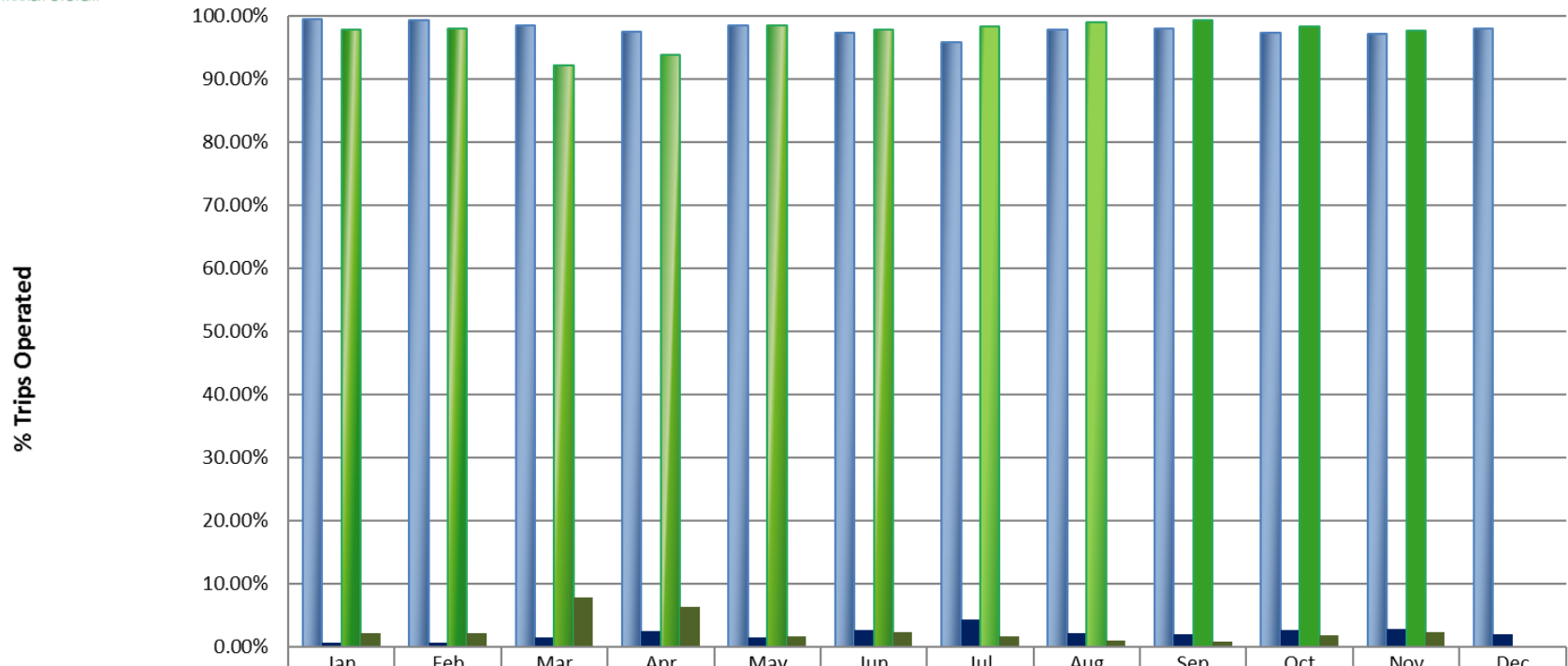
On-Time Performance 2019-2020



***Target 80% On-Time Performance**

Note: On-Time performance is measured at scheduled timepoints which represent 6.78% of the total system bus stops

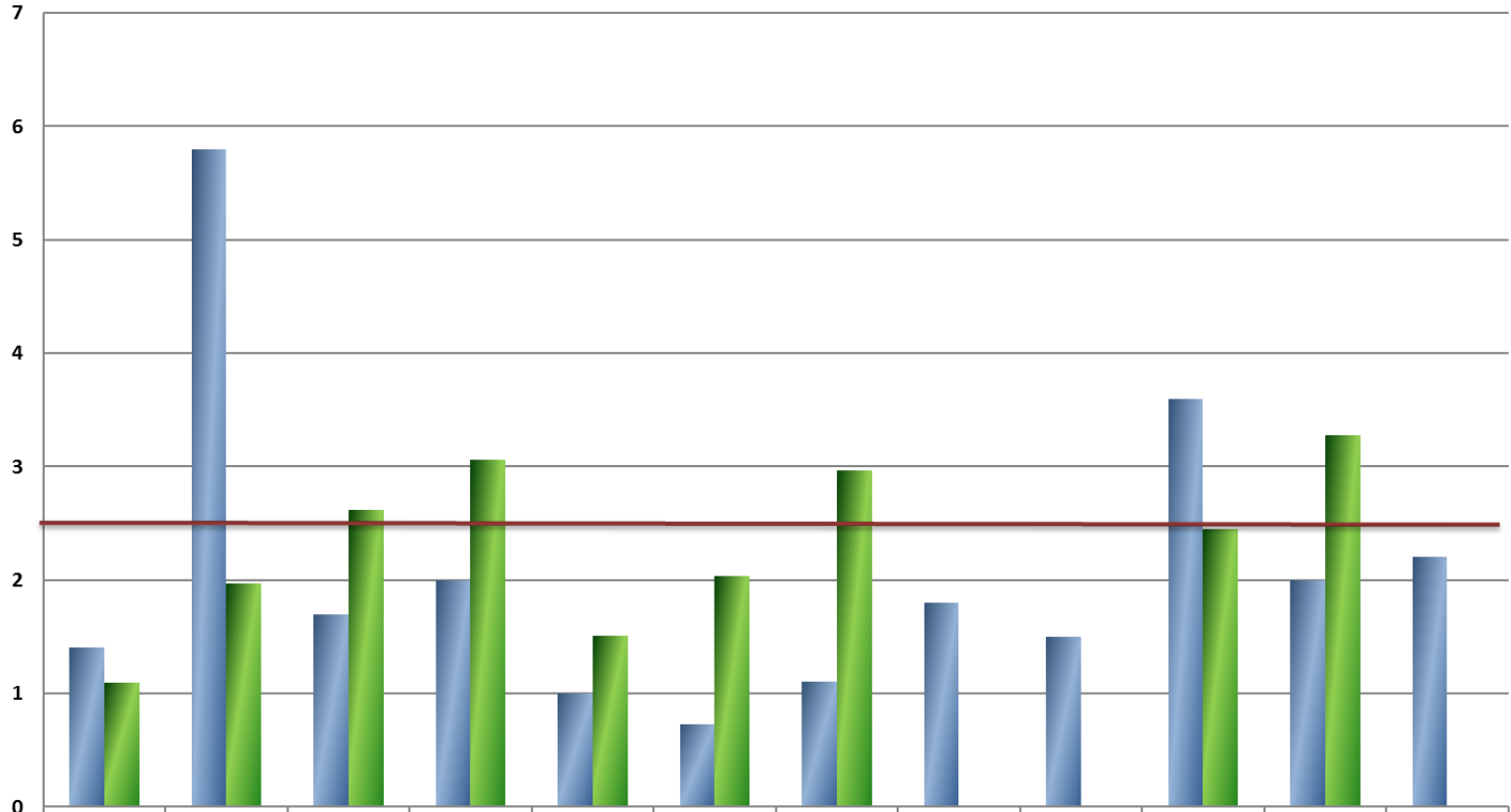
% Trips Operated 2019-2020



	Jan	Feb	Mar	Apr	May	Jun	Jul	Aug	Sep	Oct	Nov	Dec
2019 % of Scheduled Bus Trips Operated	99.40%	99.30%	98.50%	97.50%	98.50%	97.30%	95.73%	97.80%	98.00%	97.27%	97.11%	97.97%
2019 % Missed Trips	0.60%	0.70%	1.50%	2.50%	1.50%	2.70%	4.27%	2.20%	2.00%	2.73%	2.89%	2.03%
2020 % of Scheduled Bus Trips Operated	97.80%	97.89%	92.13%	93.76%	98.38%	97.71%	98.32%	98.97%	99.21%	98.24%	97.68%	
2020 % Missed Trips	2.20%	2.11%	7.87%	6.24%	1.62%	2.29%	1.68%	1.03%	0.79%	1.76%	2.32%	



Preventable Accidents per 100,000 Miles 2019-2020

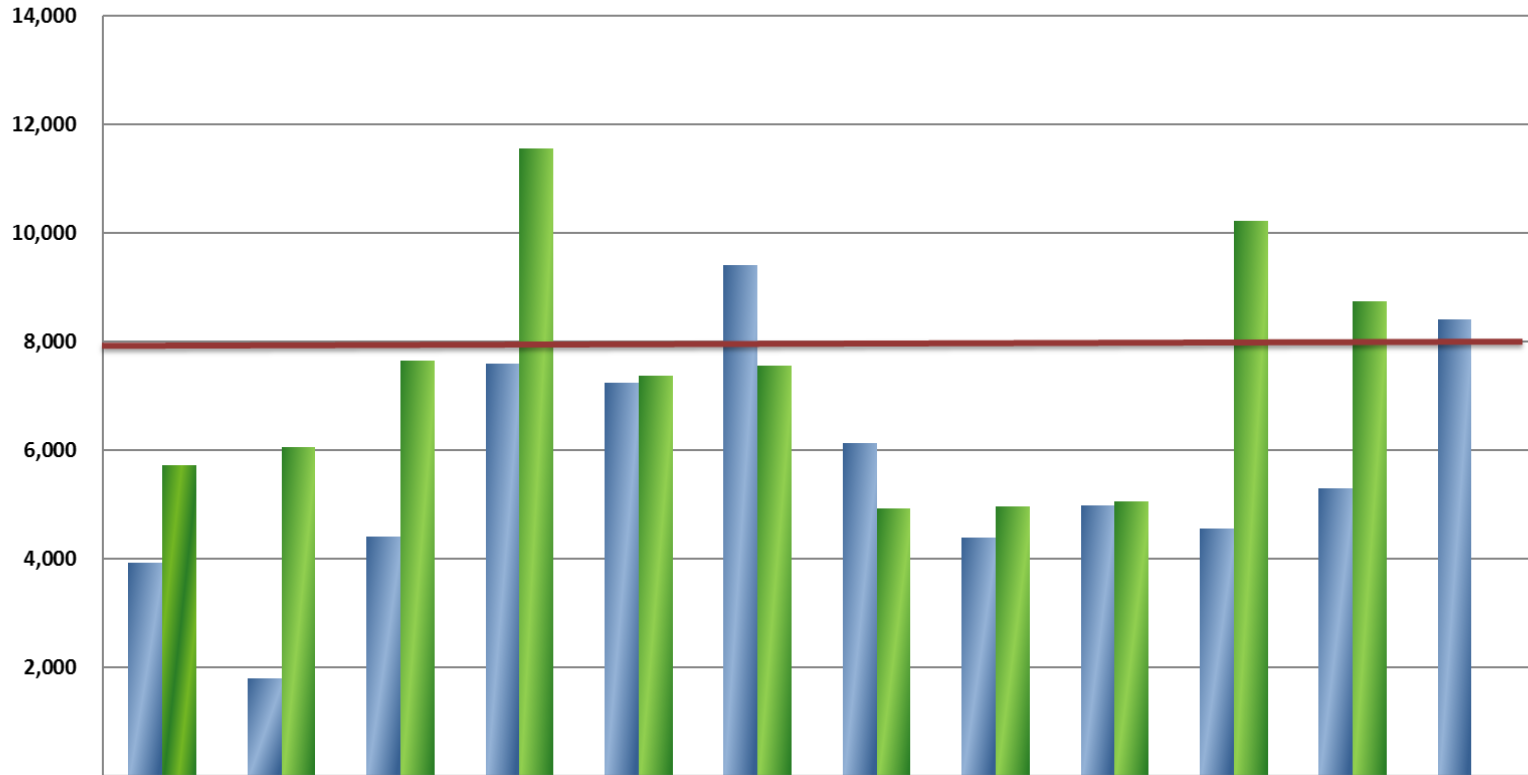


	Jan.	Feb.	March	April	May	June	July	Aug.	Sept.	Oct.	Nov.	Dec.
■ Preventable Accidents 2019	1.4	5.8	1.7	2.0	1.0	0.73	1.1	1.8	1.5	3.6	2.0	2.2
■ Preventable Accidents 2020	1.1	2.0	2.6	3.1	1.5	2.0	3.0	0	0	2.4	3.3	

*Target 2.5 Preventable Accidents Per 100,000 Miles

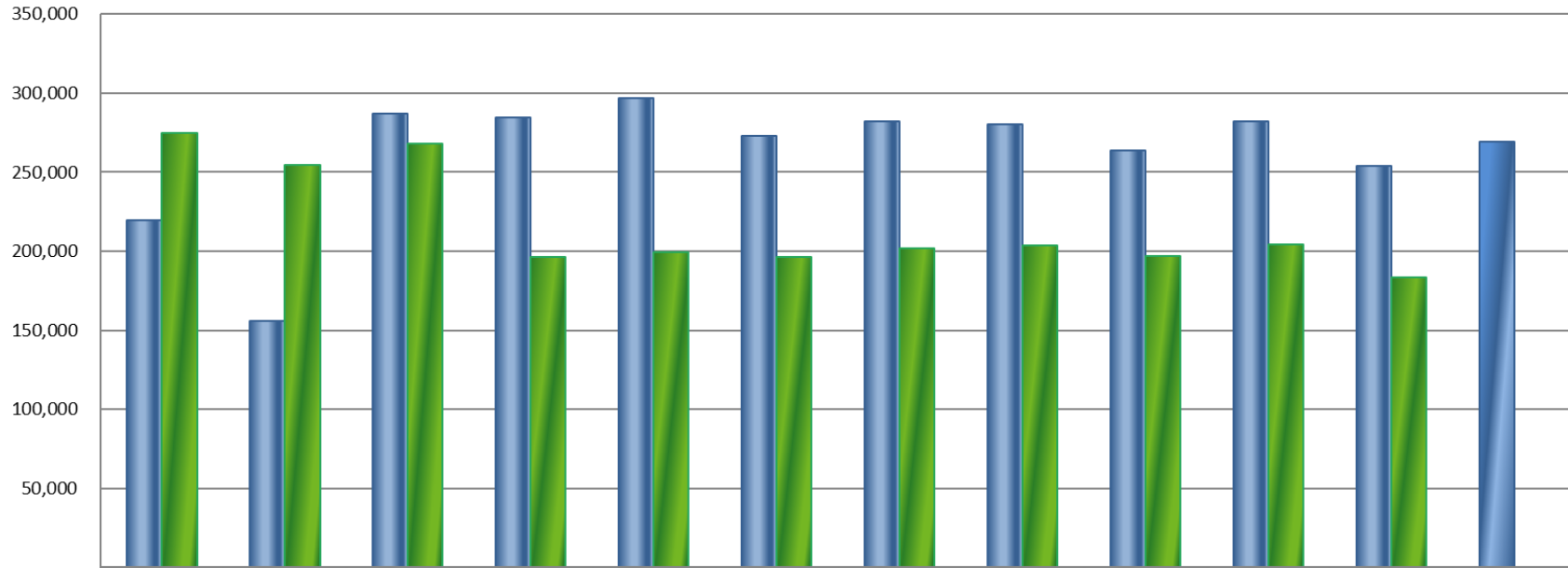


Mean Miles Between Road Calls 2019-2020



	Jan.	Feb.	Mar.	April	May	June	July	Aug.	Sept.	Oct.	Nov.	Dec.
■ 2019 Mean Miles Between Road Calls	3,922	1,792	4,415	7,583	7,237	9,415	6,130	4,383	4,971	4,554	5,288	8,411
■ 2020 Mean Miles Between Road Calls	5,722	6,060	7,653	11,547	7,375	7,557	4,930	4,965	5,049	10,217	8,731	-

Mileage 2019-2020



	Jan.	Feb.	Mar.	April	May	June	July	Aug.	Sept.	Oct.	Nov.	Dec.
■ Mileage 2019	219,625	155,859	286,945	284,305	296,706	273,021	281,985	280,497	263,457	282,376	253,816	269,140
■ Mileage 2020	274,635	254,535	267,862	196,291	199,138	196,474	202,135	203,556	196,900	204,348	183,389	